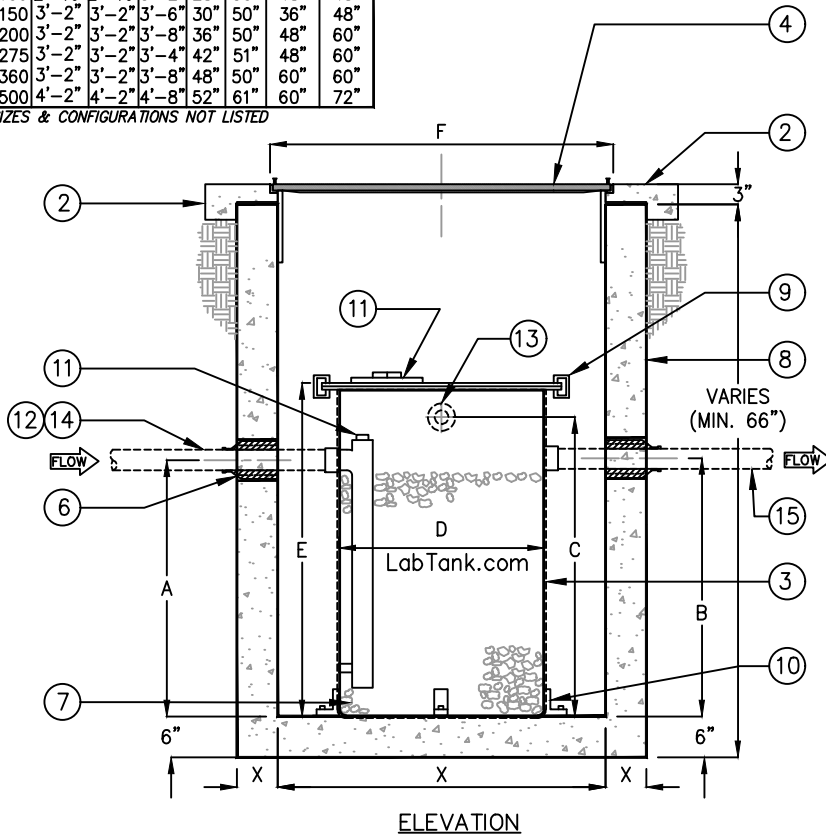


DASHED PIPING BY OTHERS

| MODEL NO. | GAL CAP | INLET A | OUTLET B | VENT C | DIA D | HT E | COVER F | VAULT X | TOP VIEW |
|-----------|---------|---------|----------|--------|-------|------|---------|---------|----------|
| ANPT-15   | 15      | 10"     | 10"      | 12"    | 17"   | 16"  | 24"     | 36"     |          |
| ANPT-30   | 30      | 2'-1"   | 2'-1"    | 2'-3"  | 18"   | 30"  | 24"     | 36"     |          |
| ANPT-55   | 55      | 2'-3"   | 2'-3"    | 2'-7"  | 24"   | 36"  | 24"     | 36"     |          |
| ANPT-100  | 100     | 2'-10"  | 2'-10"   | 3'-2"  | 28"   | 50"  | 48"     | 48"     |          |
| ANPT-150  | 150     | 3'-2"   | 3'-2"    | 3'-6"  | 30"   | 50"  | 36"     | 48"     |          |
| ANPT-200  | 200     | 3'-2"   | 3'-2"    | 3'-8"  | 36"   | 50"  | 48"     | 60"     |          |
| ANPT-275  | 275     | 3'-2"   | 3'-2"    | 3'-4"  | 42"   | 51"  | 48"     | 60"     |          |
| ANPT-360  | 360     | 3'-2"   | 3'-2"    | 3'-8"  | 48"   | 50"  | 60"     | 60"     |          |
| ANPT-500  | 500     | 4'-2"   | 4'-2"    | 4'-8"  | 52"   | 61"  | 60"     | 72"     |          |

CALL FOR SIZES & CONFIGURATIONS NOT LISTED



| KEYED NOTES |     |  |
|-------------|-----|--|
| MARK        | QTY | DESCRIPTION  |
| 1           | 1   | PRECAST CONCRETE ACID NEUTRALIZATION TANK  |
| 2           | 1   | CONCRETE APRON (BY OTHERS)   |
| 3           | 8   | HIGH DENSITY POLYETHYLENE ACID NEUTRALIZATION TANK w/ BOLT-DOWN ACCESS COVER w/ 1/4" NEOPRENE GASKET   |
| 4           | 1   | 48" DIA ACCESS COVER, GALV STEEL, BOLT DOWN & H2O TRAFFIC w/ 16" ADJUSTABLE SKIRT                      |
| 5           | 1   | INSPECTION PORT  |
| 6           | 3   | RUBBER FLEXIBLE PIPE BOOT  |
| 7           | 1   | NEUTRALIZING FILL TO CONSIST OF CHEMICAL MEDIA OF 1" TO 3" DIA. w/ 92% CALCIUM CARBONATE               |
| 8           | 1   | BITUMASTIC EXTERIOR COATING  |
| 9           | 1   | NON-CORROSIVE QUICK CLAMP FOR EASY REMOVAL   |
| 10          | 1   | STAINLESS STEEL POSITIONING BRACKET  |
| 11          | 1   | CLEANOUT   |
| 12          | 1   | ACID WASTE PIPING, BY OTHERS (REFER TO PIPE SPECIFICATIONS)  |
| 13          | 1   | XX" VENT   |
| 14          | 1   | XX" INLET PIPING   |
| 15          | 1   | XX" OUTLET PIPING  |
| 16          | 1   | NAMEPLATE<br>MFG: PARKUSA<br>888-611-PARK<br>WWW.PARKUSA.COM<br>MODEL: ANPT-XXXXX<br>DATE MANUFACTURED |

Specifications

CONCRETE: Class I/II concrete with design strength of 4500 PSI at 28 days. Unit is of monolithic construction at floor and first stage of wall with sectional riser to required depth.

REINFORCEMENT: Grade 60 reinforced with steel rebar conforming to ASTM A615 on required centers or equal.

D.I. GALVANIZED: All steel fabrication shall be in accordance to AWA D1.1. Steel shall be ASTM A36 carbon steel, and hot-dipped galvanized after fabrication in accordance to ASTM A123.


Engineering Data

Neutralization tank is structurally and hydraulically engineered conforming to Uniform Plumbing Code. Refer to Sizing Table for capacity.

Field excavation and preparation shall be completed prior to delivery of interceptor. Use dimensional data as shown.



© ParkUSA. ALL RIGHTS RESERVED.



**ACID NEUTRALIZATION TANK**  
MODEL ANPT SIZES 15-500 GALLONS

|      |    |      |     |          |      |
|------|----|------|-----|----------|------|
| PM   | PC | DRN  | ENG | DWG. NO. | REV. |
|      |    |      |     | ANPT-1   | A    |
| DATE |    | 2023 |     |          |      |

PLOTTED ON 3/23/2023 9:00 AM BY Howerton, Chris, Y:\Perkins\Website 2022 - NEED TO GO\ANPT\worked on\ANPT-1