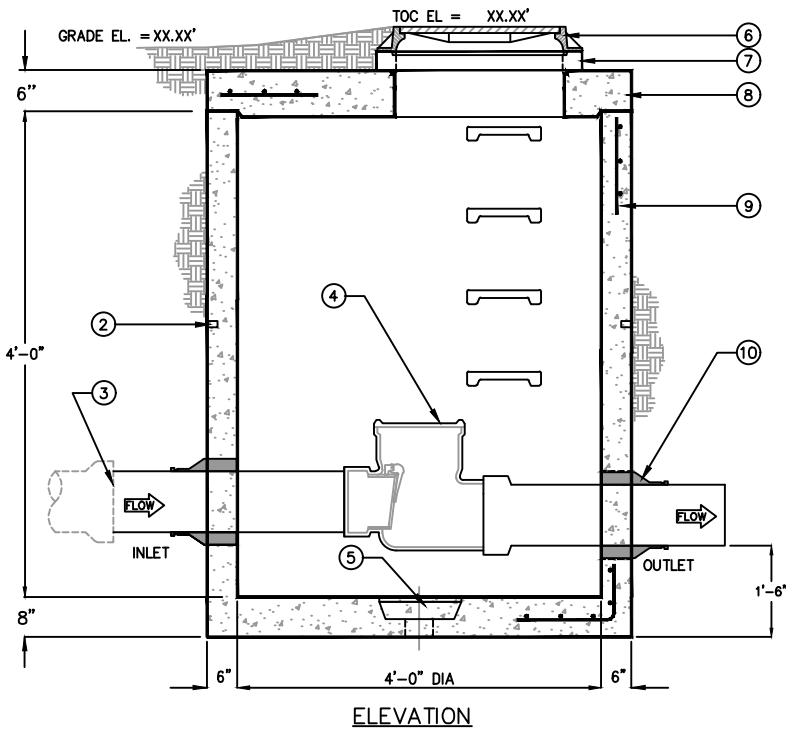


THE BACKWATER SEWER VALVE ASSEMBLY IS USED IN MAIN OR BRANCH SEWER LINES TO PROTECT BASEMENTS AND LOW AREAS AGAINST BACKFLOW FROM PUBLIC SEWERS. THE VALVE ASSEMBLY DESIGN PERMITS ACCESS TO BACKWATER VALVE ASSEMBLY, FOR SERVICING OR CLEANING, THROUGH A FULL OPENING REMOVABLE COVER. THE BACKWATER VALVE IS RECOMMENDED FOR GRAVITY FLOW SEWERS ONLY (NOT PRESSURIZED APPLICATIONS).



MODEL	BWV SIZE
BWV-2	2"
BWV-3	3"
BWV-4	4"
BWV-6	6"
BWV-8	8"

KEYED NOTES		
MARK	QTY	DESCRIPTION
1	1	NAMEPLATE INDICATING: MFG: PARKUSA 888-611-PARK WWW.PARKUSA.COM MODEL: BWV-1 DATE MANUFACTURED
2	1	LIFTING LUGS AS REQUIRED
3	1	TYPICAL PIPE BY OTHERS
4	1	BACKWATER SEWER VALVE DUCCO CAST IRON BODY WITH BRONZE CHECK VALVE
5	1	RECESSED SUMP WITH CAST IRON GRATE
6	1	24" DIA CAST IRON FRAME & COVER
7	1	EXTENSIONS TO GRADE
8	1	PRECAST CONCRETE SLAB TOP SEALED w/ PLASTIC FLEXIBLE GASKET MATERIAL
9	1	#4 REBAR @ 12" O.C.E.W. (1) MAT FOR TOP SLAB BAR BENDING & PLACEMENT SHALL COMPLY w/ LATEST ACI STANDARDS
10	2	RESILIENT PIPE CONNECTION (PRESS-SEAL)

CONTRACTOR TO FIELD VERIFY ALL ELEVATIONS.

### SPECIFICATIONS

**CONCRETE:** DESIGN STRENGTH OF 4500 PSI AT 28 DAYS. UNIT IS OF MONOLITHIC CONSTRUCTION AT FLOOR, FIRST STAGE OF WALL AND BAFFLE WITH SECTIONAL RISER TO REQUIRED DEPTH. GROSS EMPTY WEIGHT OF APPROXIMATELY 13,300 LBS.

**REINFORCEMENT:** GRADE 60 REINFORCED WITH STEEL REBAR CONFORMING TO ASTM A615 ON REQUIRED CENTERS OR EQUAL. STRUCTURAL DESIGN IS BASED ON AASHTO HS-20 LOADING.

**C.I. CASTINGS:** MANHOLE FRAMES, COVERS OR GRATES ARE MANUFACTURED OF GREY CAST IRON CONFORMING TO ASTM A48-76 CLASS 35. MANHOLE SHALL HAVE 24 INCH INSIDE DIAMETER AND BE TRAFFIC DUTY.

### ENGINEERING DATA

MANHOLE STATION IS STRUCTURALLY AND HYDRAULICALLY ENGINEERED CONFORMING TO UNIFORM PLUMBING CODE AND ASTM C-478. FIELD EXCAVATION AND PREPARATION SHALL BE COMPLETED PRIOR TO DELIVERY OF THE SEPTIC TANK. USE DIMENSIONAL DATA AS SHOWN.



© ParkUSA. ALL RIGHTS RESERVED.



## BACKWATER SEWER VALVE ASSEMBLY

PM	PC	DRN	ENG	DWG. NO.	REV.
.	.	.	.	BWV-1	A
DATE				2023	

PLOTTED ON 5/8/2023 1:06 PM BY Howerton, Chris. v: Parcarga/Website 2022 - NEED TO GO BWV-1