

CMPR-XXX-XXX

SEPARATOR SIZE
 100 - 100 GALLON
 150 - 150 GALLON
 200 - 200 GALLON
 350 - 350 GALLON
 ETC...

MAXIMUM FLOW RATE
 5 - 5 GPM
 10 - 10 GPM
 ETC...

NAMEPLATE INDICATING:
 MFG: PARKUSA
 888-611-PARK
 WWW.PARK-USA.COM
 MODEL: CMPR-1
 DATE MANUFACTURED

APPLICATIONS

- MAINTENANCE WASHDOWN & GARAGES
- GOLF COURSES
- EQUIPMENT & TRANSPORTATION WASHDOWN FACILITIES
- CARWASHES
- STORMWATER RUNOFF
- SERVICE STATION FUEL DEPOTS
- MANUFACTURING FACILITY EFFLUENT WATER
- REMEDIATION WATER CLEANUP
- GENERAL INDUSTRY

| SAND-OIL INTERCEPTOR SCHEDULE | | | | | | | | |
|-------------------------------|----------------|---------------------|-----------------|----------------|-------|----------|-----------|------------|
| MODEL NO. | CAPACITY USgal | OIL SPILL CAP (GAL) | FLOW RATE (GPM) | EMPTY WT (LBS) | DIA D | HEIGHT H | INLET FL1 | OUTLET FL2 |
| CMPR-100 | 100 | 50 | 50 | 3000 | 44" | 54" | 39" | 36" |
| CMPR-150 | 150 | 75 | 50 - 100 | 4,800 | 44" | 70" | 55" | 52" |
| CMPR-200 | 200 | 100 | 50 - 150 | 6,600 | 44" | 88" | 73" | 70" |
| CMPR-300 | 300 | 150 | 50 - 200 | 7,850 | 44" | 102" | 87" | 84" |

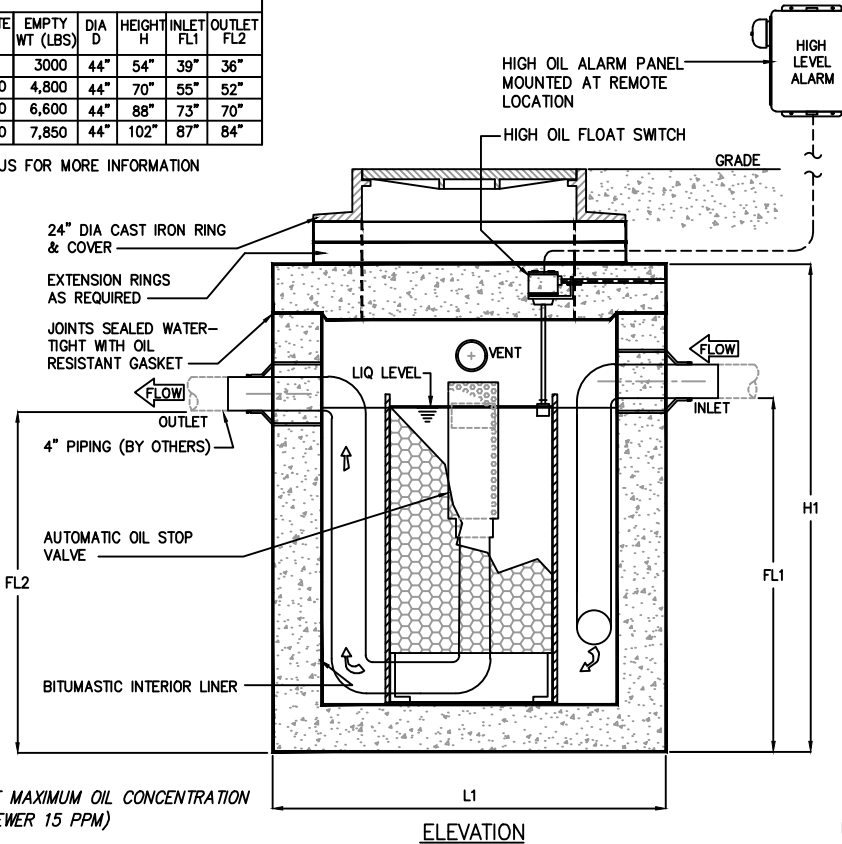
OTHER SIZES ARE AVAILABLE. CONTACT US FOR MORE INFORMATION

GUARANTEED PERFORMANCE

A certified performance analysis utilizing a proprietary computer program will accurately model systems to ensure that their effluent qualities meet the required discharge criteria (EPA and Local Codes)

Influent oily water contains oil droplets of many different sizes. These droplets rise at different rates. Park utilizes a statistical program that divides the droplets into ranges of sizes and calculates the rise rates of each range. This calculation determines which droplets the separator can capture.

Contact our Engineering Dept. @ 800-256-8041 for a free performance evaluation.



GUARANTEED PERFORMANCE FOR CODE MAXIMUM OIL CONCENTRATION (SANITARY SEWER 100 PPM, STORM SEWER 15 PPM)

SPECIFICATIONS

- CONCRETE:** CLASS I/II CONCRETE WITH OF DESIGN STRENGTH OF 4500 PSI AT 28 DAYS. UNIT IS OF MONOLITHIC CONSTRUCTION AT FLOOR AND FIRST STAGE OF WALL WITH SECTIONAL RISER TO REQUIRED DEPTH. RATED FOR H-20 LOADING.
- REINFORCEMENT:** GRADE 60 REINFORCED. NO. 4 STEEL REBAR TO CONFORM TO ASTM A615 ON REQUIRED CENTERS OR EQUAL. BAR BENDING AND PLACEMENT SHALL CONFORM THE LATEST ACI STANDARDS.
- C.I. CASTINGS:** CAST IRON RINGS AND GRATES ARE MANUFACTURED OF GREY CAST IRON CONFORMING TO ASTM A48-76 CLASS 30.

ENGINEERING DATA

INTERCEPTOR IS STRUCTURALLY AND HYDRAULICALLY ENGINEERED CONFORMING TO UNIFORM PLUMBING CODE. NOMINAL TOTAL LIQUID CAPACITY AND OIL HOLDING CAPACITY AS INDICATED. RECOMMENDED FOR FLOW RATES OF 5 TO 25 GPM (CONSULT PARK FOR PROPER SIZING). MANUFACTURER SHALL SUBMIT PERFORMANCE CALCULATIONS FOR OIL & WATER SEPARATION CERTIFIED BY A LICENSED PROFESSIONAL ENGINEER. FIELD EXCAVATION AND PREPARATION SHALL BE COMPLETED PRIOR TO DELIVERY OF INTERCEPTOR. USE DIMENSIONAL DATA AS SHOWN.



© ParkUSA. ALL RIGHTS RESERVED.



SAND-OIL SEPARATOR
 MODEL CMP - 100 THRU 400 GALLONS

| | | | | | |
|------|----|-----|-----|----------|------|
| PM | PC | DRN | ENG | DWG. NO. | REV. |
| | | | | CMPR-1 | A |
| DATE | | | | 2023 | |