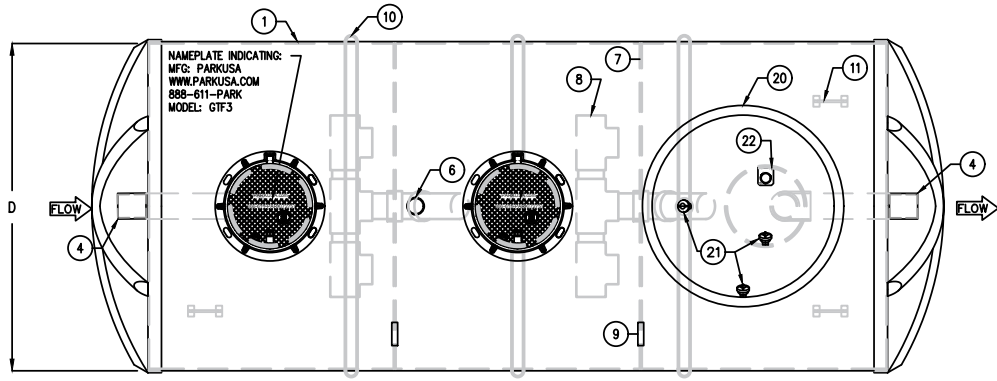
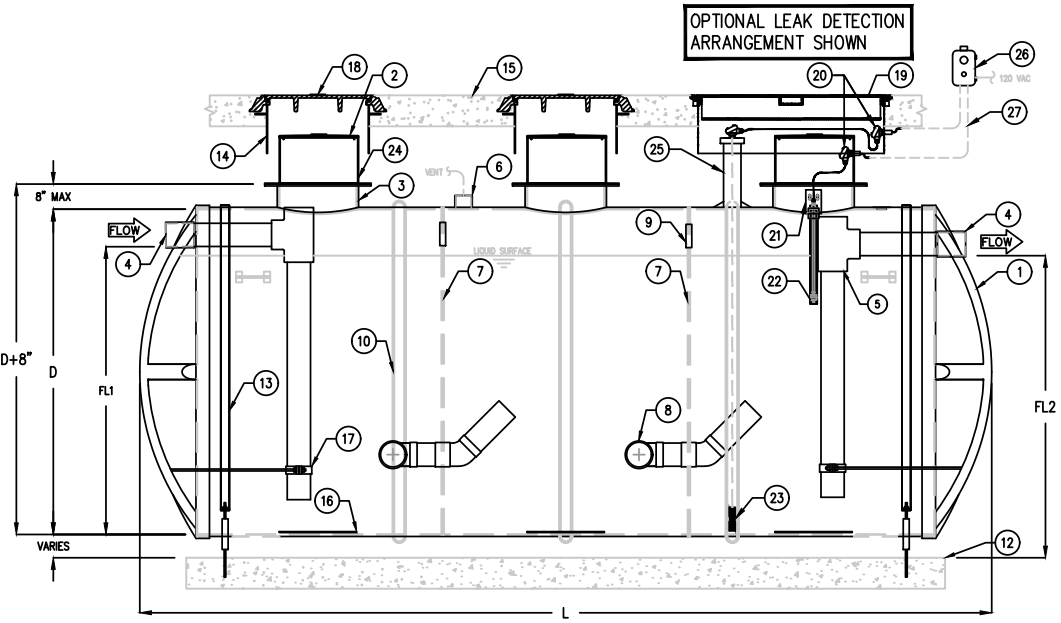


KEYED NOTES		
MARK	QTY	DESCRIPTION
1	1	REINFORCED FIBERGLASS GREASE INTERCEPTOR
2	3	HDPE ACCESS MANWAY COVER
3	3	FIBERGLASS MANWAY EXTENSION
4	2	PVC PIPE COUPLING
5	2	INTERIOR PVC PIPING & CLEANOUT
6	1	TANK VENT
7	2	INTERIOR BAFFLE
8	2	PVC DOUBLE TEE MANIFOLD
9	2	VENT SLEEVE IN BAFFLE
10	-	STRUCTURAL SUPPORT RIB (AS REQ'D)
11	4	LIFTING LUG
12	-	REINFORCED CONCRETE BALLAST LOGS OR INTEGRATED PAD (AS REQ'D)
13	-	TANK ANCHOR STRAP (AS REQ'D)
14	3	CAST-IN MANWAY W/ EXTENSION & WATERSTOP RING
15	-	CONCRETE APRON (BY OTHERS)
16	3	PIPE SUPPORT BRACKET
17	2	PIPE SUPPORT BRACKET
18	3	NAMEPLATE INDICATING MFG: PARKUSA WWW.PARKUSA.COM 888-611-PARK MODEL GTF3
19	1	HDG BOLT-DOWN DRAG-OFF WATERTIGHT RING & COVER (OPTIONAL)
20	3	ELECTRICAL CONDUIT JUNCTION BOX
21	1	FULL THREAD FLOAT BRACKET
22	1	HIGH GREASE LEVEL SENSOR (OPTIONAL)
23	1	LEAK DETECTION SENSOR IN TANK ANNULUS (OPTIONAL)
24	3	SS304 ACCESS MANWAY EXTENSION, BOLTED
25	1	LEAK DETECTION PORT EXTENSION
26	1	CONTROL PANEL W/ AUDIBLE & VISUAL ALARM FOR SENSORS (OPTIONAL)
27	2	CABLE & CONDUIT ROUTED TO CONTROL PANEL (BY OTHERS)



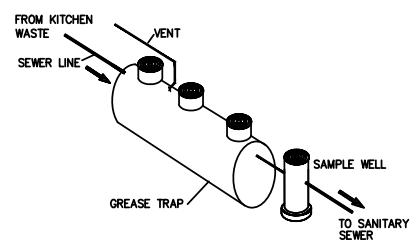
PLAN VIEW



ELEVATION VIEW



SCHEDULE OF SIZES					
MODEL	NOMINAL CAPACITY (GAL)	DIAMETER, ID (D)	MAX OVERALL LENGTH (L)	INLET FLOWLINE (FL1)	OUTLET FLOWLINE (FL2)
GTF3-4000	4000	6'-0"	26'-5"	5'-3"	5'-0"
GTF3-5000	5000	6'-0"	30'-8"	5'-3"	5'-0"
GTF3-6000	6000	8'-0"	23'-1"	7'-3"	7'-0"
GTF3-7000	7000	8'-0"	26'-1"	7'-3"	7'-0"
GTF3-8000	8000	8'-0"	28'-9"	7'-3"	7'-0"
GTF3-9000	9000	8'-0"	31'-7"	7'-3"	7'-0"
GTF3-10000	10000	10'-0"	21'-5"	9'-3"	9'-0"
GTF3-11000	11000	10'-0"	24'-0"	9'-3"	9'-0"
GTF3-12000	12000	10'-0"	25'-7"	9'-3"	9'-0"
GTF3-13000	13000	10'-0"	27'-0"	9'-3"	9'-0"
GTF3-14000	14000	10'-0"	29'-6"	9'-3"	9'-0"



STANDARD APPLICATION

SPECIFICATIONS

TYPICAL APPLICATIONS INCLUDE COMMERCIAL AND INDUSTRIAL FOOD SERVICE KITCHENS WHERE EXCESSIVE GREASE MAY INTERFERE WITH THE PROPER DRAINAGE OF THE SEWER SYSTEM. THE GREASE INTERCEPTOR IS GENERALLY BURIED BELOW GRADE FOR GRAVITY FLOW SEWER SYSTEMS. A SAMPLE WELL IS UTILIZED ON THE OUTLET SIDE FOR SAMPLING BY THE LOCAL WATER AUTHORITY.

- TANK:** THE TANK SHELL SHALL BE CONSTRUCTED FROM COMPOSITE REINFORCED FIBERGLASS. TANK SHALL HAVE ONE-PIECE CONSTRUCTION AT SHELL, END CAPS, AND BAFFLE.
- HDPE COVER:** MANHOLE COVER MANUFACTURED OF HIGH DENSITY POLYETHYLENE PLASTIC, HAVING MANWAY BOLT PATTERN AND STAINLESS STEEL HANDLES. (OPTIONAL W/O EXTENSIONS)
- FIBERGLASS COVER:** MANHOLE COVER MANUFACTURED OF COMPOSITE REINFORCED FIBERGLASS, HAVING MANWAY BOLT PATTERN AND STAINLESS STEEL HANDLES. (OPTIONAL W/O EXTENSIONS)
- D.I. CASTING:** MANHOLE FRAMES, COVERS OR GRATES ARE MANUFACTURED OF DUCTILE IRON CONFORMING TO ASTM A536, (W/ EXTENSIONS) AASHTO M306, & AASHTO M105 STANDARDS. MANHOLE SHALL BE TRAFFIC DUTY.

ENGINEERING DATA

THE GREASE INTERCEPTOR IS STRUCTURALLY & HYDRAULICALLY ENGINEERED TO CONFORM TO REGIONAL PLUMBING CODES RECOMMENDED IN MOST CITIES. CONSULT WITH LOCAL AUTHORITIES FOR SPECIFIC APPLICATION REQUIREMENTS. CONSULT WITH PARK USA FOR EXACT INSTALLATION DIMENSIONS & SHIPPING INFORMATION.

© ParkUSA. ALL RIGHTS RESERVED.



GREASE INTERCEPTOR (BELOW GRADE) MODEL GTF3-BG 4,000 THRU 14,000					
PM	PC	DRN	ENG	DWG. NO.	REV.
.	.	DAM	.	GTF3-BG	A
DATE	07/22				

CREATED ON 7/18/2022 BY [redacted]
LAST MODIFIED ON 7/18/2022 5:28 PM BY [redacted]