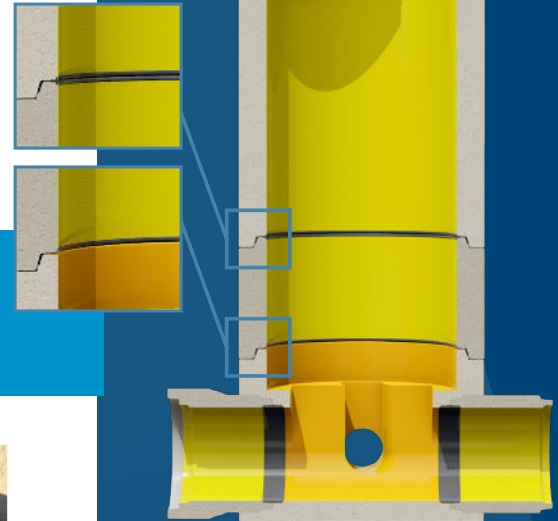
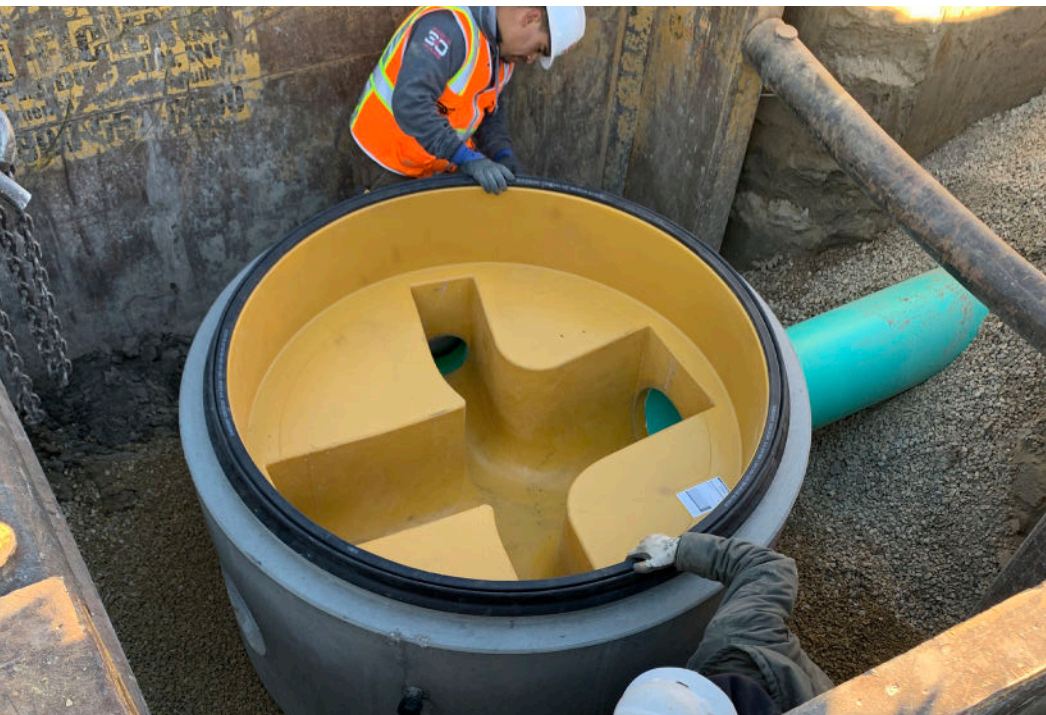


# Perfect Lined Manholes

## Cost-Effective & Corrosion-Free Sanitary Sewer Solutions

The Perfect Lined Manhole is a reinforced precast concrete manhole that meets ASTM C478 and is lined with a high-quality synthetic polymer liner, which protects the concrete from Microbial Induced Corrosion (MIC) when exposed to municipal and industrial wastewater. The entire structure of the monolithic manhole base is reliably leak-proof, and custom invert channels can accommodate pipe of almost any configuration or size.

The Perfect Lined Manhole System is easy to maintain and provides a high load-bearing capacity under static and dynamic loads. Setting a new quality standard for wastewater systems, Perfect Lined Manholes are available in standard sizes 48" to 96" in diameter with weld-free joints (larger sizes are available with welded joints).



*Rubber gaskets provide a watertight seal between sections with no field welding required.*

## Advantages

- Corrosion resistant
- Watertight up to 13 psi
- High abrasion resistance
- High load capacity
- Smooth liner surface
- Low maintenance
- 100+ year design life
- Easy inspection
- Quick and easy install with no field welding



## Contact Us!

801-225-2416  
info@genevapipe.com