

KEYED NOTES		
MARK	QTY	DESCRIPTION
1	1	INTERCEPTOR BASIN
2	1	WEIR BASIN
3	1	INLET CAST IRON FRAME & GRATE, H-20 RATED
4	1	INLET PIPING
5	8	HYDROPHOBIC MEDIA
6	1	6 MONTH STORM OUTLET PIPE
7	1	REMOVABLE DEBRIS BASKET STAINLESS STEEL
8	1	HIGH OIL FLOAT SWITCH
9	1	AUTOMATIC OIL STOP VALVE
10	1	SLUDGE BAFFLE
11	-	BITUMASTIC INTERIOR LINER
12	1	DIFFUSION BAFFLE
13	1	25YR STORM OVERFLOW WEIR
14	1	STORM EVENT OVERFLOW WEIR
15	-	MANWAY EXTENSIONS AS REQ'D
16	1	GALVANIZED BOLT DOWN RING & COVER, H-20 RATED
17	-	ALL JOINTS TO BE SEALED W/ PLASTIC FLEXIBLE GASKET
18	1	HIGH OIL ALARM PANEL MOUNTED AT REMOTE LOCATION
19	1	OVERFLOW PIPING
20	1	OUTLET PIPE CLEAN-OUT (BY OTHERS)
21	1	NAMEPLATE INDICATING: MFG: PARKUSA.COM TEL 888-611-PARK MODEL: HMI-1 DATE MANUFACTURED

SPECIFICATIONS

CONCRETE: DESIGN STRENGTH OF 4500 PSI AT 28 DAYS. UNIT IS OF MONOLITHIC CONSTRUCTION AT FLOOR AND FIRST STAGE OF WALL WITH SECTIONAL RISER TO REQUIRED DEPTH.

REINFORCEMENT: GRADE 60 REINFORCED WITH STEEL REBAR CONFORMING TO ASTM A615 ON REQUIRED CENTERS OR EQUAL.

C.I. CASTINGS: MANHOLE FRAMES, COVERS OR GRATES ARE MANUFACTURED OF GREY CAST IRON CONFORMING TO ASTM A48-76 CLASS 30. MANHOLE SHALL BE TRAFFIC DUTY.

ENGINEERING DATA

INTERCEPTOR IS STRUCTURALLY AND HYDRAULICALLY ENGINEERED CONFORMING TO REGULATORY STANDARDS. NOMINAL TOTAL LIQUID CAPACITY AND OIL HOLDING CAPACITY AS INDICATED. FIELD EXCAVATION AND PREPARATION SHALL BE COMPLETED PRIOR TO DELIVERY OF INTERCEPTOR. USE DIMENSIONAL DATA AS SHOWN.

STORMWATER INTERCEPTOR ARE UTILIZED TO REDUCE NON-POINT SOURCE POLLUTION ASSOCIATED WITH OIL AND SEDIMENT. THE INTERCEPTOR IS DESIGNED TO ALLOW FOR THE DETAINMENT OF SETTLEABLE & FLOATABLE SOLIDS & LIQUIDS. THE INTERCEPTOR SHOULD BE INSPECTED ON A REGULAR BASIS TO DETERMINE PROPER OPERATION AND CLEANING.

INFLUENT OILY WATER CONTAINS OIL DROPLETS OF MANY DIFFERENT SIZES. THESE DROPLETS RISE AT DIFFERENT RATES. PARK UTILIZES A STATISTICAL PROGRAM THAT DIVIDES THE DROPLETS INTO RANGES OF SIZES AND CALCULATES THE RISE RATES OF EACH RANGE. THIS CALCULATION DETERMINES WHICH DROPLETS THE SEPARATOR CAN CAPTURE.

APPLICATIONS

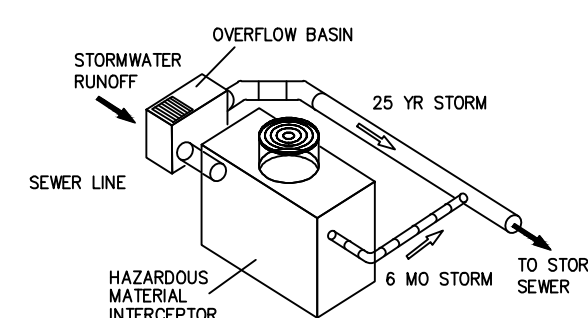
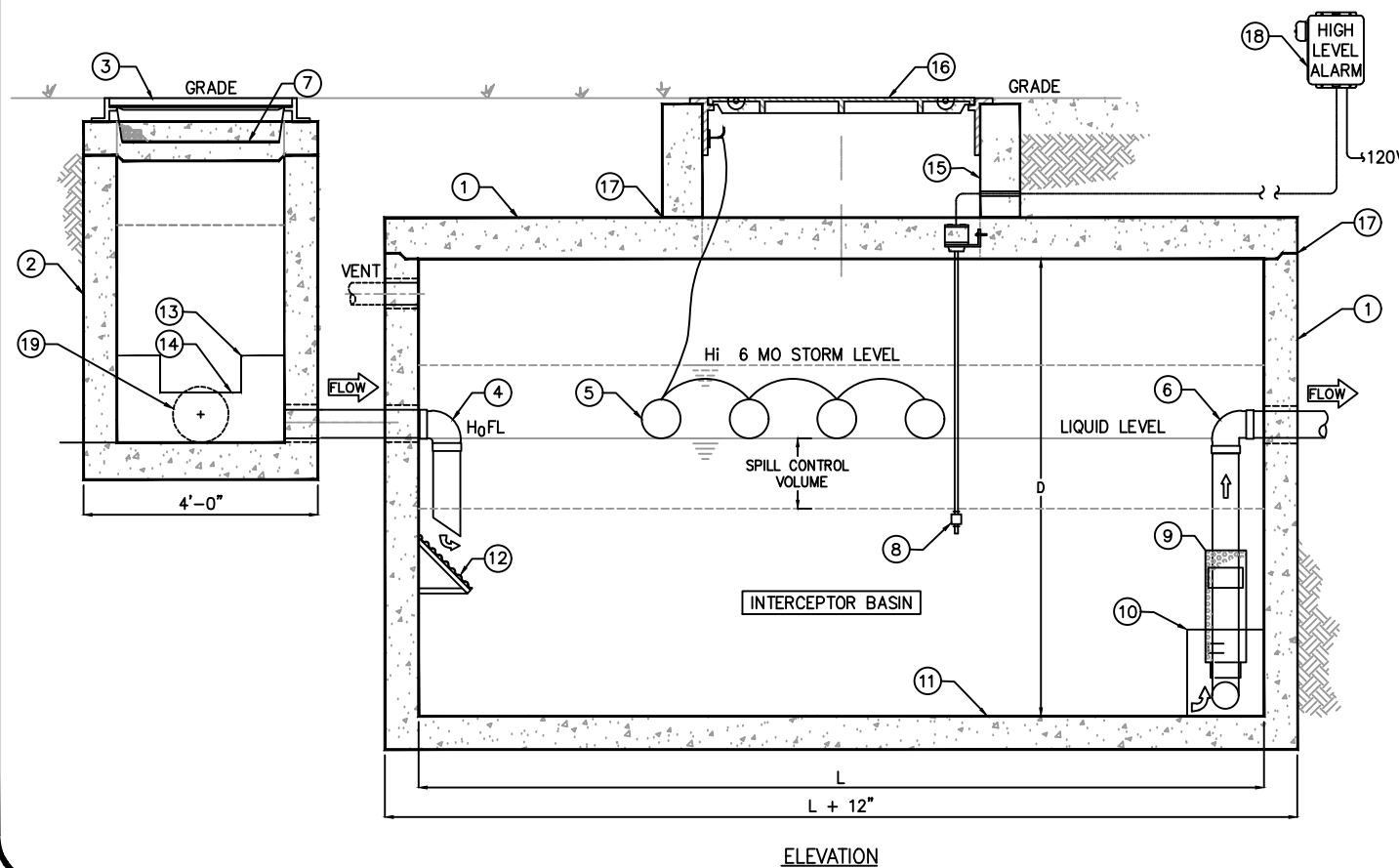
- MAINTENANCE WASHDOWN & GARAGES
- GOLF COURSES
- EQUIPMENT & TRANSPORTATION WASHDOWN FACILITIES
- CARWASHES
- STORMWATER RUNOFF
- SERVICE STATION FUEL DEPOTS
- MANUFACTURING FACILITY EFFLUENT WATER
- REMEDIATION WATER CLEANUP
- GENERAL INDUSTRY

CONTACT OUR ENGINEERING DEPT. @ 866-611-PARK FOR A FREE PERFORMANCE EVALUATION.



STORMTROOPER HMI					
MODEL NO.	W, WIDTH (FT)	L, LENGTH (FT)	D, DEPTH (FT)	VOLUME (GAL)	Q (GPM)
HMI-100	5.0	8.0	5.0	1,496	126
HMI-125	6.0	12.0	6.0	3,231	158
HMI-150	6.0	12.0	7.5	4,039	190
HMI-165	6.0	15.0	6.0	4,039	221
HMI-175	7.5	15.0	7.0	5,891	253
HMI-200	7.6	15.0	7.6	6,481	284
HMI-225	7.5	15.0	9.0	7,574	316
HMI-250	8.0	17.0	9.5	9,664	348
HMI-275	8.0	17.0	10.5	10,681	379
HMI-300	10.0	20.0	9.0	13,464	411
HMI-325	10.0	20.0	9.8	14,586	442
HMI-350	10.0	20.0	10.5	15,708	474
HMI-375	10.0	20.0	11.3	16,830	506
HMI-400	10.0	20.0	12.5	18,700	537

Design Tip:
The ParkUSA StormTrooper HMI is a patented stormwater wet vault specifically designed to accommodate fuel spills up to 750 gallons and intercept free oil, grease, TSS, debris and other pollutants found in stormwater. The system qualifies as a permanent best management practice (BMP) for EPA Stormwater Quality and SPCC management programs.



© ParkUSA. ALL RIGHTS RESERVED.

HAZARDOUS MATERIAL INTERCEPTOR
STORMTROOPER MODELS HMI-100 THRU HMI 400

PM	PC	DRN	ENG	DWG. NO.	REV.
				HIMI-1	
DATE				2023	

CREATED ON 3/1/2023 BY: [unreadable]
LAST MODIFIED ON 5/15/2023 7:40 AM BY: chawerton

PLOTTED ON 5/15/2023 7:41 AM BY: Howerton, Chris. Y:\Parkdaga\Website 2022 - NEED TO GO\STORMTROOPER\HMI-1