
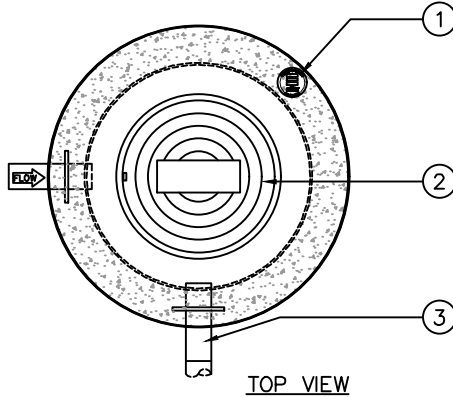
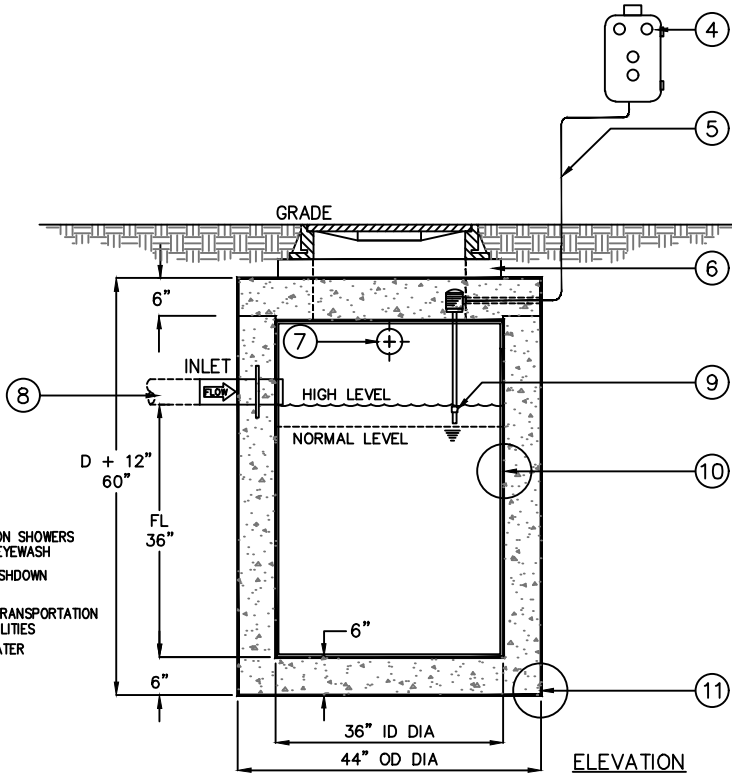


**HOW TO SPECIFY**

MODEL NUMBER: HTS  
  
 TANK SIZE (GAL)  
 50 - 50 GAL  
 100 - 100 GAL  
 750 - 750 GAL  
 INTERIOR LINER  
 V - PVC  
 P - POLYETHYLENE  
 E - EPOXY/RHINO LINING



TOP VIEW



ELEVATION

**APPLICATIONS**

- DECONTAMINATION SHOWERS & EMERGENCY EYEWASH
- HAZARDOUS WASHDOWN CONTAINMENT
- EQUIPMENT & TRANSPORTATION WASHDOWN FACILITIES
- REMEDIATION WATER CLEANUP

KEYED NOTES		
MARK	QTY	DESCRIPTION
1	1	NAMEPLATE INDICATING: MFG: PARKUSA 888-611-PARK WWW.PARKUSA.COM MODEL: HTS DATE MANUFACTURED
2	1	24" DIA CAST IRON FRAME/COVER BOLT-DOWN WITH S.S. BOLTS
3	1	3" VENT PIPING, REFER TO PIPE SPECIFICATIONS
4	1	NEMA 4X FRP ENCLOSURE WITH AUDIBLE & VISUAL ALARM (120V/ 5 AMP) (MOUNTED BY OTHERS)
5	1	CABLE & CONDUIT ROUTED TO ALARM PANEL (BY OTHERS)
6	1	CONCRETE EXTENSION TO BE USED TO RAISE TO GRADE LEVEL
7	1	VENT
8	1	4" INLET PIPING, REFER TO PIPE SPECIFICATIONS
9	1	HIGH LEVEL ALARM FLOAT SWITCH (N.O.)
10	1	INTERIOR OF TANK SHALL BE LINED WITH: POLYVINYL CHLORIDE (PVC) 5MM HIGH DENSITY POLYETHYLENE (HDPE) 3/16" THK 304 STAINLESS STEEL 3/16" THK EPOXY/RHINO LINER (ENGINEER CHOOSE ONE)
11	1	EXTERIOR OF TANK TO BE COATED WITH BITUMASTIC VAPOR BARRIER

SIZING TABLE						
MODEL	GAL	DIA	D	FL	WT	lbs.
HTS-50	50	36"	32"	20"	4,000	
HTS-100	100	36"	36"	24"	4,400	
HTS-150	150	36"	48"	36"	5,200	
HTS-200	200	36"	60"	48"	6,100	
HTS-250	250	36"	72"	60"	6,900	
HTS-300	300	48"	54"	42"	4,800	
HTS-350	350	48"	60"	48"	5,400	
HTS-400	400	48"	66"	54"	5,900	
HTS-450	450	48"	72"	60"	6,400	
HTS-500	500	60"	54"	42"	8,800	

**SPECIFICATIONS**

- CONCRETE:** CLASS I/II CONCRETE WITH DESIGN STRENGTH OF 4500 PSI AT 28 DAYS. UNIT IS OF MONOLITHIC CONSTRUCTION AT FLOOR AND FIRST STAGE OF WALL WITH SECTIONAL RISER TO REQUIRED DEPTH.
- REINFORCEMENT:** GRADE 60 REINFORCED WITH STEEL REBAR CONFORMING TO ASTM A615 ON REQUIRED CENTERS OR EQUAL.
- C.I. CASTINGS:** MANHOLE FRAMES, COVERS OR GRATES ARE MANUFACTURED OF GREY CAST IRON CONFORMING TO ASTM A48-76 CLASS 30. MANHOLE SHALL HAVE 24 INCH INSIDE DIAMETER AND BE TRAFFIC DUTY.

**ENGINEERING DATA**

NEUTRALIZATION TANK IS STRUCTURALLY AND HYDRAULICALLY ENGINEERED CONFORMING TO UNIFORM PLUMBING CODE. REFER TO SIZING TABLE FOR CAPACITY.

FIELD EXCAVATION AND PREPARATION SHALL BE COMPLETED PRIOR TO DELIVERY OF INTERCEPTOR. USE DIMENSIONAL DATA AS SHOWN.



© ParkUSA. ALL RIGHTS RESERVED.



HOLDING TANK  
 MODEL HTS - 50 TO 500 GALLONS

PM	PC	DRN	ENG	DWG. NO.	REV.
				HTS-1	A
DATE				2023	