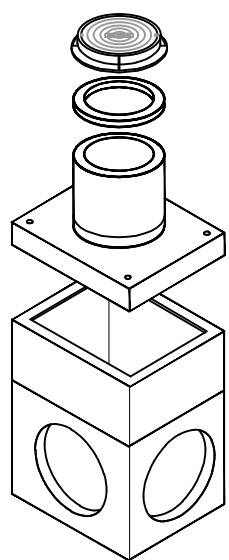
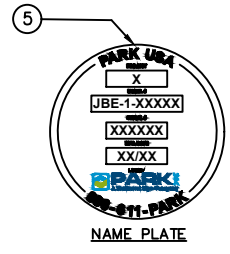


PLAN

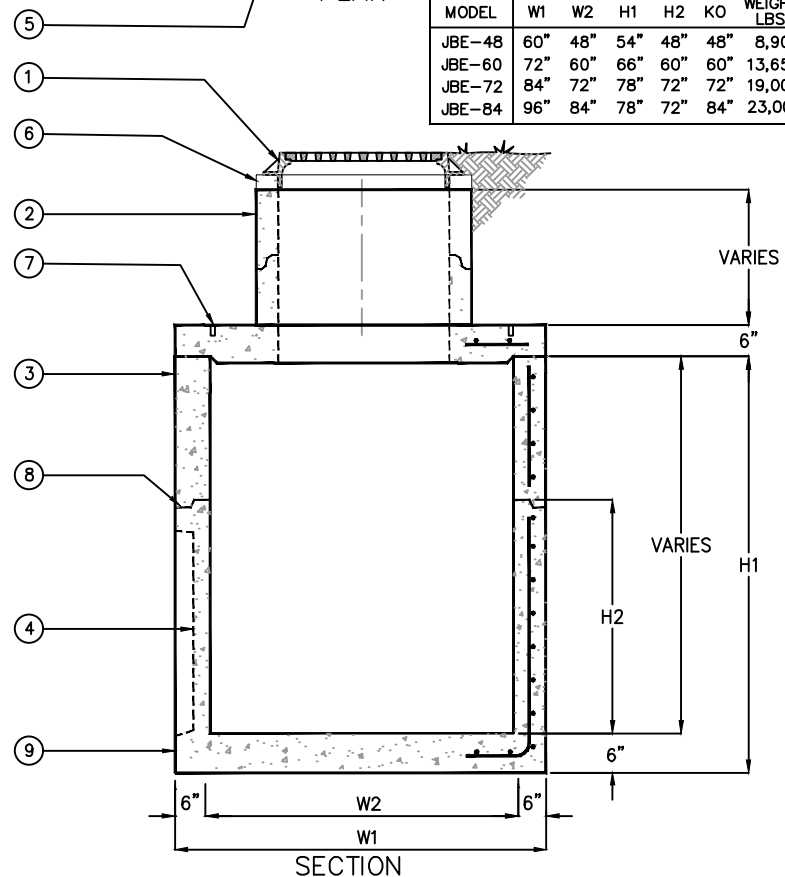
MODEL	W1	W2	H1	H2	KO	WEIGHT LBS
JBE-48	60"	48"	54"	48"	48"	8,900
JBE-60	72"	60"	66"	60"	60"	13,650
JBE-72	84"	72"	78"	72"	72"	19,000
JBE-84	96"	84"	78"	72"	84"	23,000



ISOMETRIC



NAME PLATE



SECTION

KEYED NOTES		
MARK	QTY	DESCRIPTION
1	1	CAST IRON FRAME & COVER/GRATE, FURNISHED LOOSE OR CAST-IN
2	1	PRECAST CONCRETE EXTENSION, AS REQUIRED
3	1	PRECAST CONCRETE RISER SECTION
4	4	THIN WALL KNOCKOUT ON ALL 4 SIDES, SEE KO DIMENSION FOR MAXIMUM PIPE O.D.
5	1	NAMEPLATE INDICATING: MFG: PARKUSA 888-611-PARK WWW.PARKUSA.COM MODEL: JBE-1 DATE MANUFACTURED
6	-	GRADE RINGS AS REQUIRED
7	-	LIFTING LUGS AS REQUIRED
8	-	ALL JOINTS SEALED WATER-TIGHT WITH RAM-NEK
9	1	PRECAST CONCRETE BOTTOM SECTION



**SPECIFICATIONS**

**CONCRETE :** CLASS II CONCRETE WITH OF DESIGN STRENGTH OF 4500 PSI AT 28 DAYS. UNIT IS OF MONOLITHIC CONSTRUCTION AT FLOOR AND FIRST STAGE OF WALL WITH SECTIONAL RISER TO REQUIRED DEPTH. RATED FOR H-20 LOADING.

**REINFORCEMENT:** GRADE 60 REINFORCED. STEEL REBAR CONFORMING TO ASTM A615 ON REQUIRED CENTERS OR EQUAL.

**C.I. CASTINGS:** CAST IRON FRAMES AND GRATES ARE MANUFACTURED OF GREY CAST IRON CONFORMING TO ASTM A48-76 CLASS 30.



**JUNCTION BOX  
MODEL JBE - 48" THRU 84"**

PM	PC	DRN	ENG	DWG. NO.	REV.
				JBE-1	A
DATE				2023	

PLOTTED ON 4/22/2024 11:25 AM BY Vu, Kate, D:\File replacement website\JBE-1

© ParkUSA. ALL RIGHTS RESERVED.