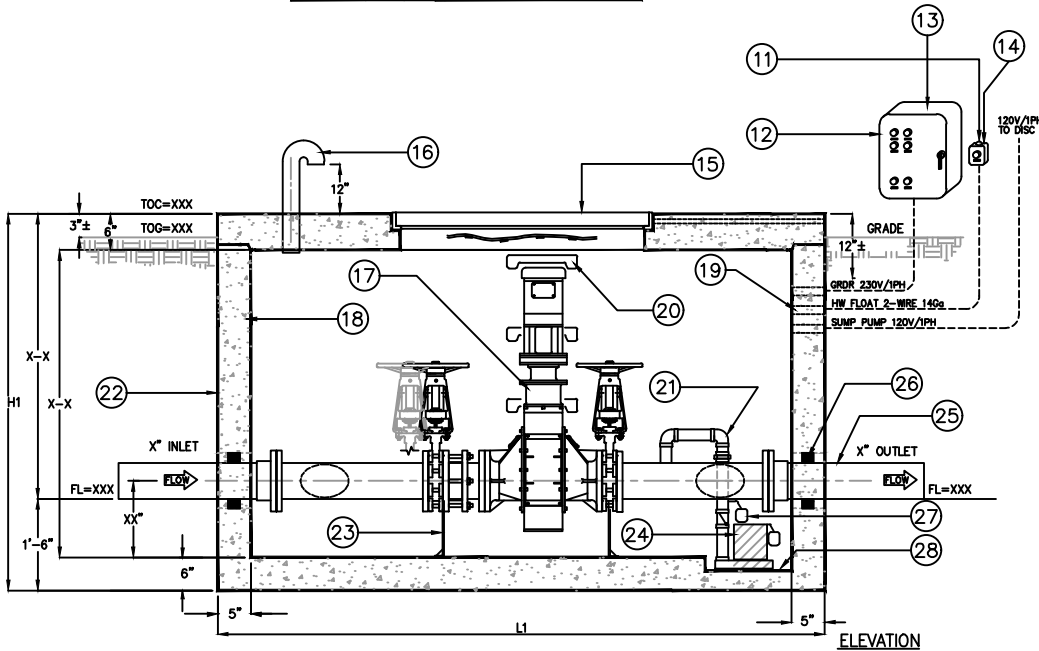


MODEL	SIZE D	BY PASS	L1	W1	H1	WEIGHT LBS
MAC-4	4"	4"	9'-0"	6'-0"	6'-6"	20,000
MAC-6	6"	6"	9'-0"	6'-0"	6'-6"	20,000
MAC-8	8"	8"	10'-0"	6'-0"	6'-6"	24,000
MAC-10	10"	10"	10'-0"	6'-0"	6'-6"	24,000
MAC-12	12"	12"	12'-0"	7'-0"	6'-6"	32,000

KEYED NOTES		
MARK	QTY	DESCRIPTION
1	1	FLG 45° ELL (TYP-2)
2	1	KNIFE GATE VALVE (TYP)
3	2	WYE FLG x FLG
4	1	VENT
5	1	2" CONDUIT
6	1	1" CONDUIT
7	1	1" CONDUIT
8	1	1-1/4" SUMP DISCHARGE INTO BY-PASS
9	1	FLG X MJ ADAPTER (TYP)
10	1	NAMEPLATE INDICATING: MFG: PARKUSA 888-611-PARK MODEL: MAC-1 DATE MANUFACTURED
11	1	HIGH LEVEL ALARM PANEL
12	1	CONTROL PANEL MTD IN REMOTE LOCATION. ALL MOUNTING, WIRING, & CONDUIT BY ELEC. CONTRACTOR
13	1	480V/3PH TO DISC
14	1	120V/1PH TO DISC
15	1	36" x 36" ALUMINUM HATCHWAY TRAFFIC DUTY, WATER TIGHT w/ SAFETY NET
16	1	4" SCH 40 GALVANIZED STEEL VENT PIPING w/ SCREEN
17	1	INLINE GRINDER UNIT
18	1	PREFABRICATED VAULT & ASSEMBLY MFG BY PARK
19	1	CONDUIT SLEEVE (TYP-3)
20	1	OSHA STEPS OR LADDER
21	1	1-1/4" PIPING w/ CHECK VALVE & UNION
22	1	EXTERIOR COATED w/ BITUMASTIC WATER PROOFING-15 MILS DFT TO 12" FROM TOC
23	1	GALVANIZED STEEL SUPPORTS
24	1	SUMP PUMP w/ FLOAT SWITCH
25	1	DUCTILE IRON STUB-OUT
26	1	X" HOLE FOR X" DI PIPE w/ LS-XX X XPC
27	1	HI-LEVEL FLOAT SWITCH
28	1	12" x 12" x 3" DEEP SUMP



**SPECIFICATIONS**

**CONCRETE:** CLASS I/II CONCRETE WITH DESIGN STRENGTH OF 4500 PSI AT 28 DAYS. UNIT IS OF MONOLITHIC CONSTRUCTION AT FLOOR AND FIRST STAGE OF WALL WITH SECTIONAL RISER TO REQUIRED DEPTH. COMBINED ASSEMBLY WEIGHT OF APPROXIMATELY AS INDICATED.

**REINFORCEMENT:** GRADE 60 REINFORCED. STEEL REBAR CONFORMING TO ASTM A615 ON REQUIRED CENTERS OR EQUAL. BAR BENDING & PLACEMENT SHALL COMPLY WITH THE LATEST ACI STANDARDS FOR PRECAST CONCRETE. LIFTING INSERTS SHALL BE INSTALLED PER MANUFACTURER'S REQUIREMENTS.

**FABRICATED STEEL:** ALL STEEL FABRICATION SHALL BE IN ACCORDANCE TO AWA D1.1. STEEL SHALL BE ASTM A36 CARBON STEEL, AND HOT-DIPPED GALVANIZED AFTER FABRICATION IN ACCORDANCE TO ASTM A123.

UNIT SHALL BE STRUCTURALLY AND HYDRAULICALLY ENGINEERED CONFORMING TO UPC AND ACI BUILDING CODES. MANUFACTURER SHALL ENSURE VAULT ASSEMBLY DESIGN ACCOUNTS FOR PREVENTION OF BUOYANCY EFFECT.

FIELD EXCAVATION AND PREPARATION SHALL BE COMPLETED PRIOR TO DELIVERY OF INTERCEPTOR. USE DIMENSIONAL DATA AS SHOWN.

© ParkUSA. ALL RIGHTS RESERVED.



**INLINE MACERATOR GRINDER ASSEMBLY  
MODEL TDC SIZE 4" THRU 12"**

PM	PC	DRN	ENG	DWG. NO.	REV.
				MAC-1	A
DATE				2023	

PLOTTED ON 4/22/2024 11:05 AM BY Vu, Kate, D:\File replacement website\MAC-1