

PLAN VIEW

SPECIFICATIONS

CONCRETE : CLASS 1 CONCRETE WITH DESIGN STRENGTH OF 4500 PSI AT 28 DAYS. UNIT IS OF MONOLITHIC CONSTRUCTION AT FLOOR AND FIRST STAGE OF WALL WITH SECTIONAL RISER TO REQUIRED DEPTH. COMBINED ASSEMBLY WEIGHT OF APPROXIMATELY 87,000 LBS.

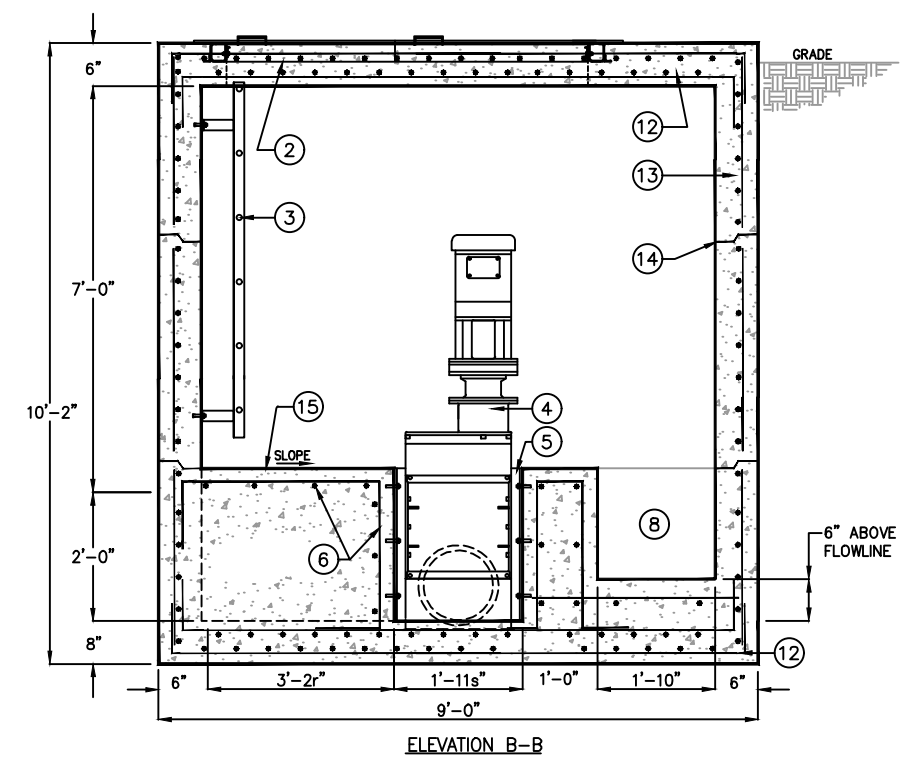
REINFORCEMENT: GRADE 60 REINFORCED. STEEL REBAR CONFORMING TO ASTM A615 ON REQUIRED CENTERS OR EQUAL. BAR BENDING & PLACEMENT SHALL COMPLY WITH THE LATEST ACI STANDARDS FOR PRECAST CONCRETE. LIFTING INSERTS SHALL BE INSTALLED PER MFG'S REQUIREMENTS.

HATCHWAY: HATCHWAY SHALL BE CONSTRUCTED OF 1/4" REINFORCED ALUMINUM SKID RESISTANT FLOOR PLATE WITH EXTRUDED ALUMINUM FRAME W/ CONTINUOUS CONCRETE ANCHOR. STAINLESS STEEL TAMPERPROOF BOLTING & SAFETY CHAIN.

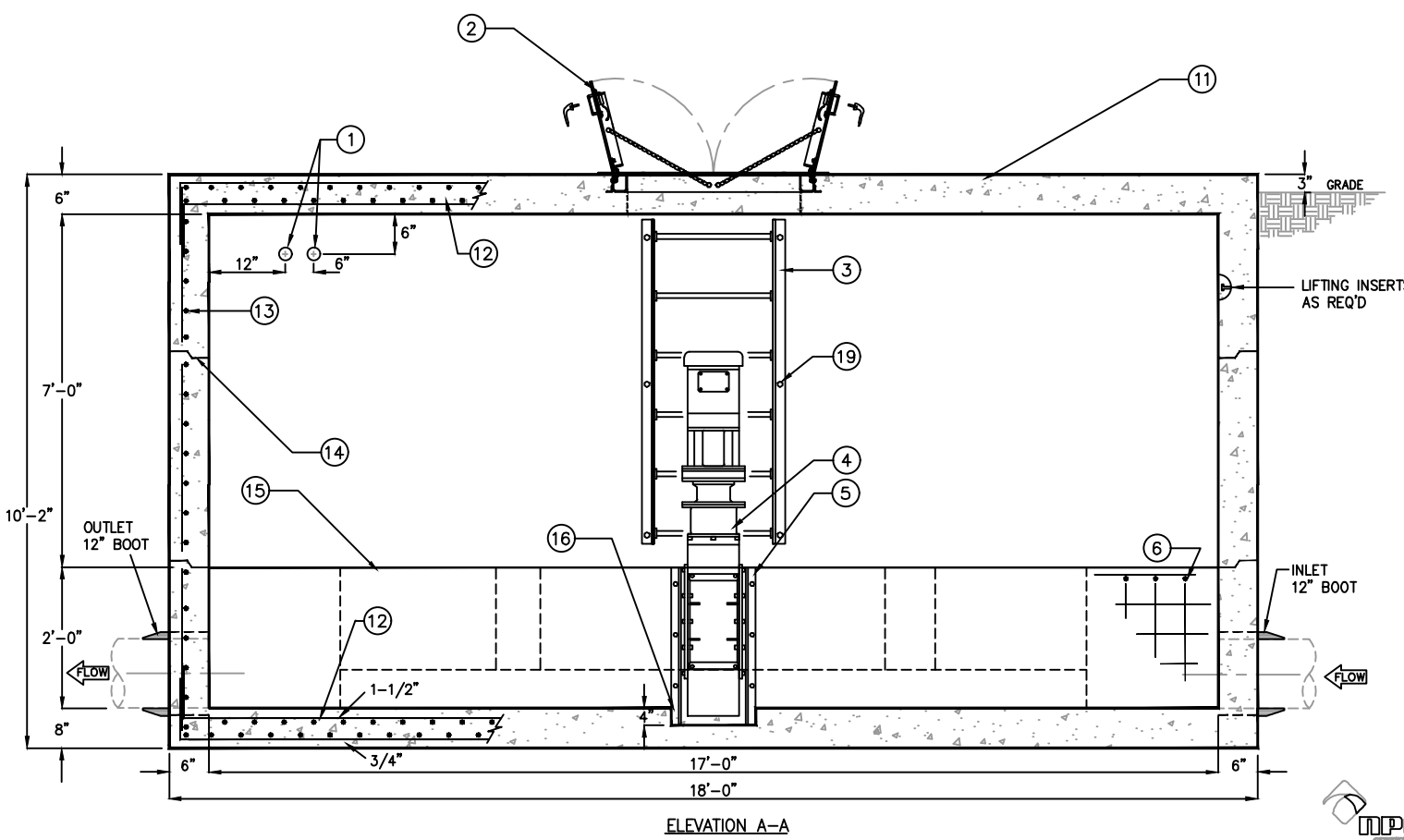
ENGINEERING DATA

FIELD EXCAVATION AND PREPARATION SHALL BE COMPLETED PRIOR TO DELIVERY OF ASSEMBLY. USE DIMENSIONAL DATA AS SHOWN.

| KEYED NOTES | | |
|-------------|-----|---|
| MARK | QTY | DESCRIPTION |
| 1 | 2 | 1 1/2" CONDUIT SLEEVES |
| 2 | 1 | 36" x 72" DUAL LEAF ALUMINUM HATCHWAY WITH STAINLESS STEEL HARDWARE, SLAM-LOCK, & SAFETY CHAIN. |
| 3 | 1 | OSHA ACCESS LADDER, GALVANIZED STEEL |
| 4 | 1 | CHANNEL GRINDER |
| 5 | 1 | STEEL CHANNEL FRAME |
| 6 | 1 | #4 @ 8" O.C.E.W. IN PLATFORM AREAS |
| 7 | 1 | CHANNEL |
| 8 | 1 | BY-PASS CHANNEL |
| 9 | 1 | EXTENT OF CONCRETE PLATFORM |
| 10 | 1 | NAMEPLATE INDICATING: MFG: PARK ENVIRONMENTAL 888-611-PARK WWW.PARKUSA.COM MODEL: MACTDCT DATE MANUFACTURED |
| 11 | 1 | BROOM FINISH |
| 12 | 1 | #5 @ 6" OCEW (2-MATS) @ TOP |
| 13 | 1 | #5 @ 6" OCEW FOR ALL WALLS |
| 14 | 1 | ALL JOINTS TO BE FILLED WITH PLASTIC FLEXIBLE GASKET (RAMNEK) |
| 15 | 1 | CONCRETE PLATFORM |
| 16 | 1 | 17 1/2" x 4" DEEP BLOCKOUT |
| 17 | 1 | #5 @ 6" OCEW (2-MATS) @ BTM |
| 18 | 1 | OSHA APPROVED LADDER 18" WIDE x 6'-6" LONG |
| 19 | 1 | ANCHOR BOLT & NUT (TYPICAL) |



ELEVATION B-B



ELEVATION A-A

NOTE: GRINDER UNIT & ASSOCIATED MOUNTING HARDWARE & INSTALLATION TO BE FURNISHED BY OTHERS.



© ParkUSA. ALL RIGHTS RESERVED.



**MACERATOR GRINDER DETAIL
CHANNEL TYPE**

| | | | | | |
|------|------|-----|-----|----------|------|
| PM | PC | DRN | ENG | DWG. NO. | REV. |
| | | | | MAC-CH1 | A |
| DATE | 2023 | | | | |

CREATED ON 5/1/2023 BY: chowerton
LAST MODIFIED ON 5/1/2023 11:27 PM BY: chowerton

PLOTTED ON 12/14/2023 4:58 PM BY: Howerton, Chris, Y:\Parkusa\Website 2022 - NEED TO DC\MAC-CH1\MAC-CH1