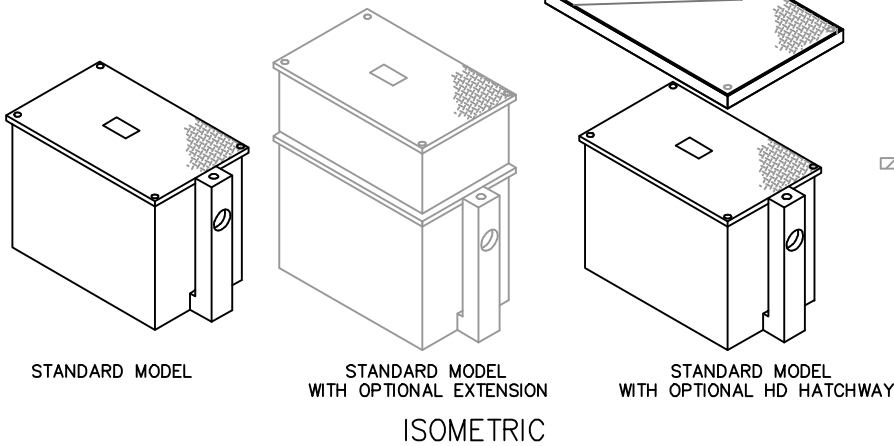


TYPICAL INSTALLATIONS




DIMENSIONAL DATA										
MODEL	FLOW RATE GPM	GREASE CAPACITY LBS	VOLUME GAL	C	D	E	F	G	EMPTY WT LBS	INLET/OUTLET NO-HUB CONN.
MGTL-150	75	150	65	1'-10 3/4"	1'-6 1/2"	1'-6 1/2"	3'-0"	2'-4 5/8"	315	0'-3"
MGTL-200	100	200	110	2'-3"	1'-11"	1'-11"	3'-6 3/4"	2'-9 5/8"	410	0'-3"
MGTL-250	125	250	150	2'-6 1/8"	2'-0 1/2"	2'-0 1/2"	4'-1 1/4"	3'-4"	750	0'-3"
MGTL-300	150	300	195	2'-6 3/4"	2'-1 1/4"	2'-1 1/4"	4'-8"	3'-5 5/8"	860	0'-4"
MGTL-400	200	400	270	2'-11 1/2"	2'-5 7/8"	2'-5 7/8"	5'-1"	3'-7 5/8"	1020	0'-4"
MGTL-500	250	500	465	3'-5"	3'-0"	3'-0"	5'-11"	4'-3 5/8"	1390	0'-6"
MGTL-600	300	600	665	3'-10 1/4"	3'-3 5/8"	3'-3 5/8"	6'-8"	4'-10 5/8"	1770	0'-6"
MGTL-700	350	700	865	4'-2 1/2"	3'-7 7/8"	3'-7 7/8"	7'-3"	5'-3 5/8"	2100	0'-6"
MGTL-800	400	800	1095	4'-6 1/4"	3'-11 5/8"	3'-11 5/8"	7'-10"	5'-7"	2450	0'-6"
MGTL-900	450	900	1280	4'-7 1/4"	4'-0 5/8"	4'-0 5/8"	8'-4"	6'-0"	2700	0'-6"
MGTL-1000	500	1000	1440	4'-9 1/4"	4'-3 5/8"	4'-3 5/8"	8'-8"	6'-2"	2860	0'-6"

GENERAL INFORMATION

HYDROMECHANICAL GREASE INTERCEPTORS (HGIs) ARE ESSENTIAL IN NON-PRIVATE ESTABLISHMENTS FOR REMOVING EXCESSIVE GREASE THAT MAY IMPEDE THE PROPER DRAINAGE AND TREATMENT OF WASTEWATER. LOCAL PLUMBING CODES TYPICALLY REQUIRE THESE INTERCEPTORS WHERE THERE IS CONSIDERABLE WASTEWATER OUTPUT. HGIs ARE COMMONLY INSTALLED IN COMMERCIAL AND INSTITUTIONAL KITCHENS AS WELL AS IN FOOD PROCESSING PLANTS, WHERE WASTE OFTEN INCLUDES HIGH ORGANIC LOADS SUCH AS GREASE, OILS, FATS, AND BOTH DISSOLVED AND SUSPENDED FOOD PARTICLES, ALONG WITH DETERGENTS. THE INTERCEPTOR CAPTURES LIQUID GREASY WASTE AND/OR SOLID DEBRIS, RETAINING IT LONG ENOUGH TO ALLOW THE GREASE TO COOL AND SEPARATE FROM THE WATER. THIS DETENTION TIME NOT ONLY FACILITATES THE COAGULATION OF THE GREASE BUT ALSO ENSURES THE SOLID WASTE IS SEPARATED FROM THE WASTEWATER BEFORE IT ENTERS THE SANITARY SEWER SYSTEM.

PARKUSA OFFERS HYDROMECHANICAL GREASE INTERCEPTORS SUITABLE FOR ALL APPLICATIONS AND COMPLIANT WITH ALL CODE REQUIREMENTS.

© ParkUSA. ALL RIGHTS RESERVED.



**HYDROMECHANICAL GREASE INTERCEPTOR (HGI)
MODELS 150 THRU 1000 LBS CAPACITY**

PM	PC	DRN	ENG	DWG. NO.	REV.
DATE	4/24			MGTL-1-WA	A

LAST MODIFIED BY KJU ON 4/18/2024 4:12 PM; LAST PLOTTED ON 4/18/2024 4:13 PM BY VU, KATE; FILE NAME: MGTL-1-WA.DWG