

DIMENSIONS AND WEIGHTS

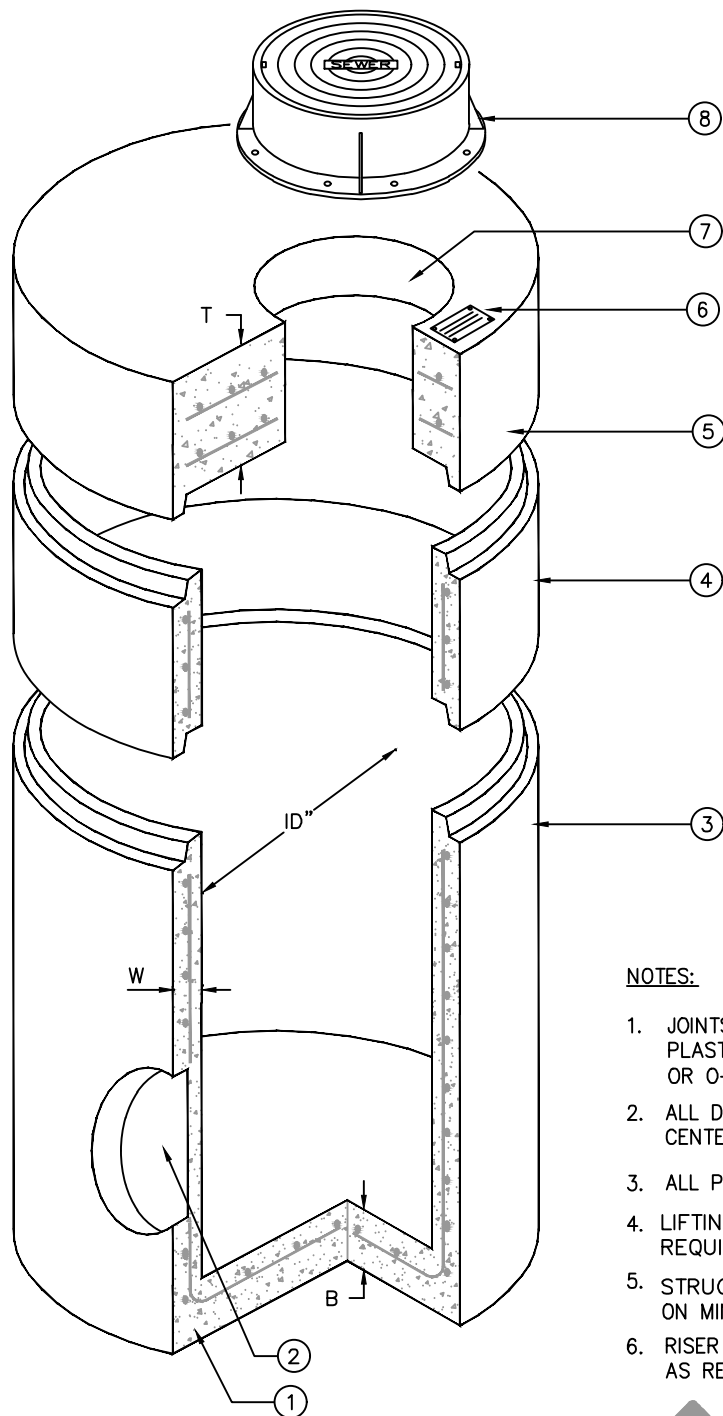
MODEL NO	I.D. SIZE (in)	W (in)	B (in)	T (in)	RISER WT/LF (lb)
MHHD-48	48	5	8	20	868
MHHD-60	60	6	8	24	1300
MHHD-72	72	6	10	30	1811
MHHD-96	96	6	12	36	2350

APPLICATIONS

- AIRPORTS
- CARGO LOADING AREAS
- HEAVY INDUSTRIAL PLANTS

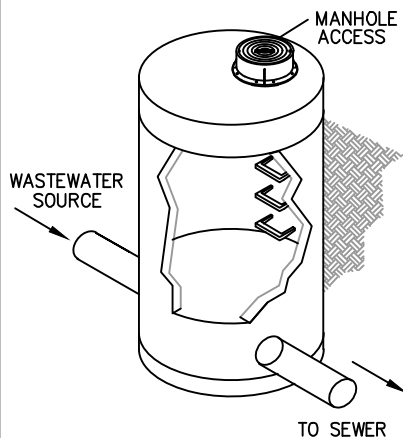
KEYED NOTES

MARK	QTY	DESCRIPTION
1	1	BOTTOM (OPTIONAL)
2	-	BLOCKOUTS AS REQUIRED
3	1	RISER
4	-	EXTENSIONS AS REQUIRED 12"/24"/36"/48" HEIGHTS
5	1	TOP SECTION
6	1	NAMEPLATE INDICATING MFG: PARKUSA TEL: 888-611-PARK MODEL: MHHD
7	1	TRANSITION LID OPENING AS REQUIRED
8	1	30" DIA CAST IRON MANHOLE COVER, FURNISHED LOOSE OR CAST-IN, COVER SHALL BE RATED FOR 200,000 LBS



NOTES:

1. JOINTS TO BE SEALED W/ PLASTIC RAM-NEK GASKET. OR O-RING.
2. ALL DIMENSIONS ARE TO CENTER OF BLOCK-OUTS.
3. ALL PIPING BY OTHERS
4. LIFTING INSERTS AS REQUIRED.
5. STRUCTURE TO BE PLACED ON MIN. 6" STABILIZED BASE.
6. RISER SECTIONS FURNISHED AS REQUIRED



© ParkUSA. ALL RIGHTS RESERVED.

SPECIFICATIONS

- CONCRETE:** CLASS I/II CONCRETE WITH DESIGN STRENGTH OF 5000 PSI AT 28 DAYS. UNIT IS OF MONOLITHIC CONSTRUCTION AT FLOOR AND FIRST STAGE OF WALL WITH SECTIONAL RISER TO REQUIRED DEPTH.
- REINFORCEMENT:** GRADE 60 REINFORCED WITH STEEL REBAR CONFORMING TO ASTM A615 ON REQUIRED CENTERS OR EQUAL. MANHOLE TO CONFORM TO ASTM-C478 SPECIFICATIONS.
- C.I. CASTINGS:** CAST IRON FRAMES AND GRATES ARE MANUFACTURED OF GREY CAST IRON CONFORMING TO ASTM A48-76 CLASS 35, PROOF LOADING OF 200,000 LBS.



**MANHOLE - EXTRA HEAVY-DUTY
MODEL MHHD**

PM	PC	DRN	ENG	DWG. NO.	REV.
				MHHD-1	A
DATE				2023	

PLOTTED ON 4/28/2023 9:13 AM BY Howerton, Chris, Y:\Peridings\Website 2022 - NEED TO GC\MH - COMPLETE\Worked on\MHHD-1

CREATED ON 2/10/2023 BY -----
LAST MODIFIED ON 2/10/2023 10:39 AM BY chowerton