

METER VAULT®

WATER METERING SYSTEM

Features

- Approved by all cities and municipalities
- Variety of piping configurations
- Factory pre-assembled and tested
- In stock and fast delivery
- Quick and easy Installation
- Precast concrete vault and access hatchway
- Innovative design, perfect component alignment for inground installations
- OEM top name components

Water Metering Systems

The ParkUSA® MeterVault® is a water meter system designed to measure the volume of water usage for residential, municipal, commercial, and industrial applications.

Clean water is a valuable resource to which Americans have become dependent for all aspects of personal, recreation, and business activities. Water originates from either below ground or surface water sources. Water utilities process and distribute the water via underground water systems. Utility companies charge customers for the water usage. To monitor and meter the water usage, water meters are used to record this information. The water meter is generally located near the property line of the end-user's facility and is installed in a concrete vault for protection and accessibility.

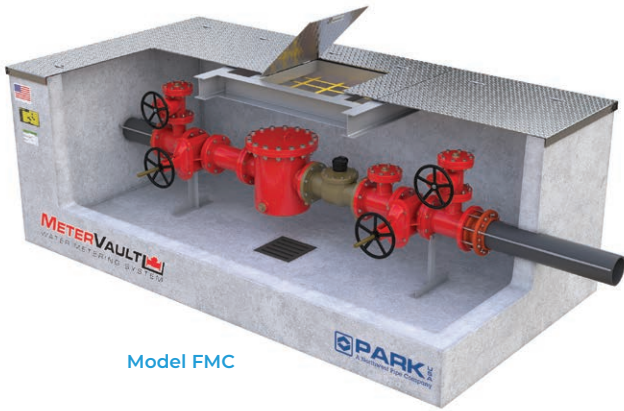
Municipalities around the country require unique water meter arrangements and specifications. Engineers rely on ParkUSA®'s code knowledge and technical expertise to specify the right equipment.

OEM Brands:

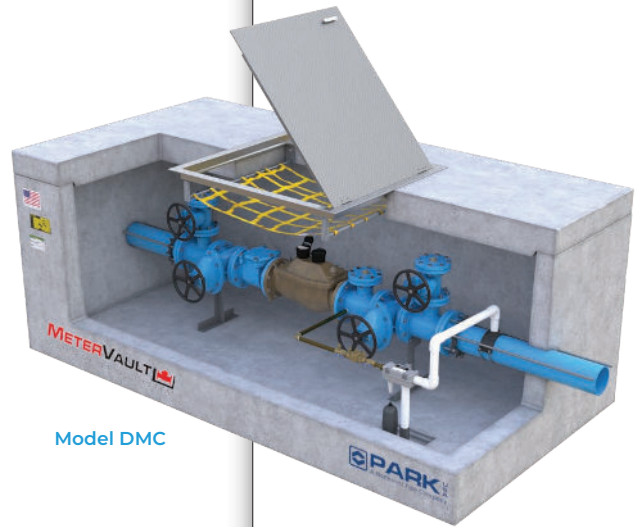


WD | METERVAULT Standard

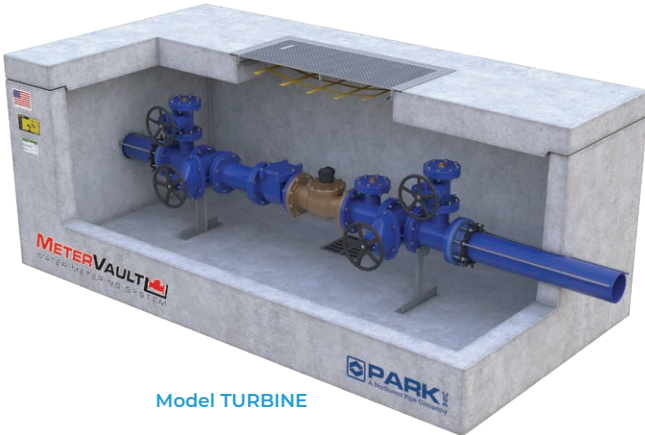




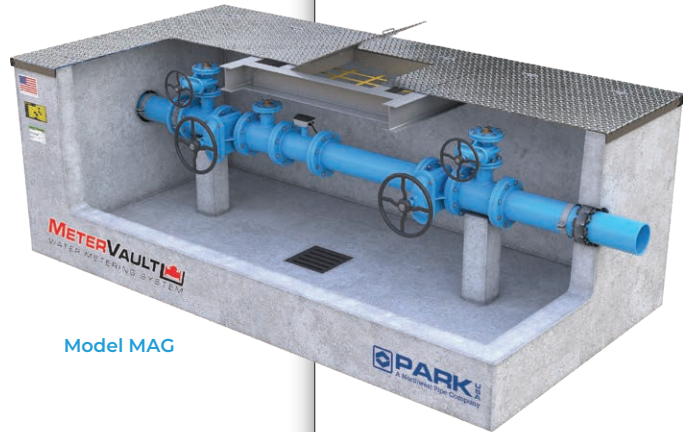
Model FMC



Model DMC



Model TURBINE



Model MAG

How it Works

Although there are multiple types of water meters, the function is the same; to measure the volume of water used. The water meter typically has a strainer upstream to protect against debris and reduce turbulence. On the upstream and downstream side of the water meter are isolation gate valves. Along with a bypass, this arrangement allows the meter to facilitate future calibration and maintenance without service interruption to the end user. Since the water meter assembly is typically placed underground, it is housed within a vault enclosure. The vault is manufactured of precast concrete and contains a hatchway for accessibility to the meter and accessories.

To request a quote or catalog, visit request.parkusa.com.

APPLICATIONS



Municipal



Commercial



Manufacturing



Industrial



Residential