

General Information

PARK StormTrooper® Interceptor

The StormTrooper stormwater interceptor is designed to receive & treat stormwater runoff on a gravity-flow and once-through basis.

Guaranteed Performance

Pre-engineered coalescing media packs are utilized for enhanced separation which provide SUPERIOR performance compared to other separators which utilize baffles or diverters.

Applications

The PARK StormTrooper® Interceptor is designed for stormwater runoff from commercial & industrial applications where excessive pollutants may harm the environment or damage sewer systems.

By-Pass Design

The unique design of the control basin allows for results an owner can clearly see. During a storm event, untreated stormwater enters the inlet compartment and is diverted to the interceptor for treatment. Clean stormwater can be witnessed in the effluent compartment after treatment.

Maintenance

StormTrooper has become known in the industry as the "Easiest to Maintain." Hatchway design makes inspection and vault entry accessible for maintenance. All compartments allow for the larger hose associated with Vector Truck pump out. Maintenance instructions and logs are available from Park Engineering.

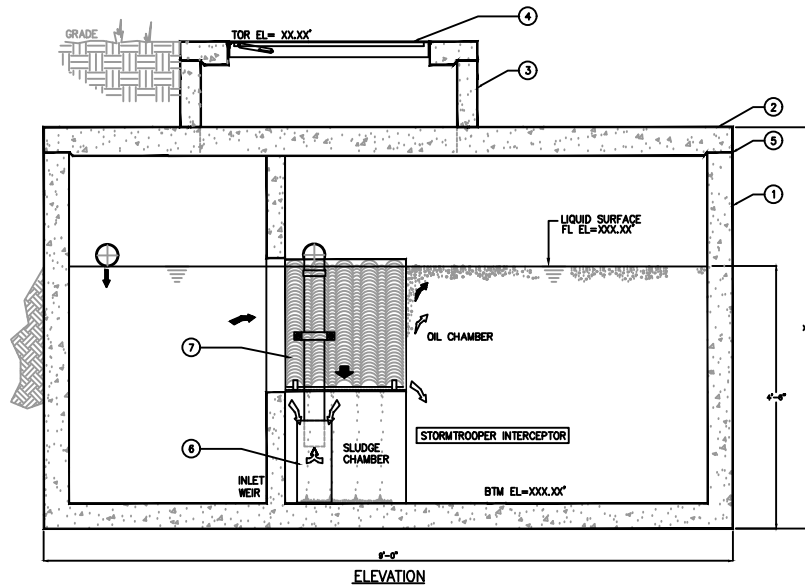
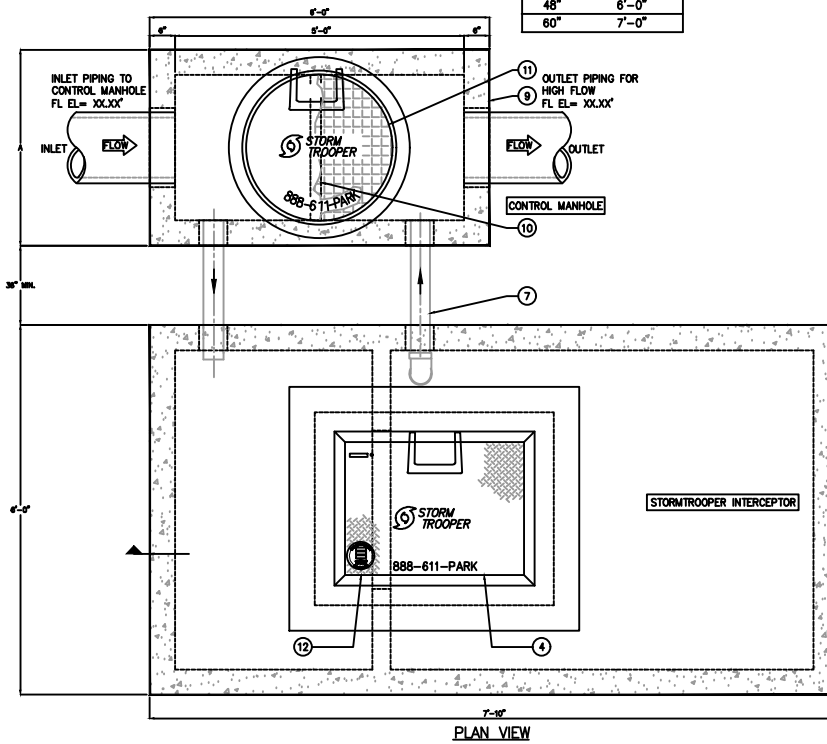
Call Us

Contact Park Engineering for help sizing, SWOMPs and performance information.

APPLICATIONS

- INDUSTRIAL
- COMMERCIAL
- RESIDENTIAL
- INSTITUTIONAL
- REDEVELOPMENT
- NPDES - MUNICIPAL/INDUSTRIAL
- BMP STRUCTURAL SOLUTION

MAX PIPE SIZE (IN)	CONTROL BASIN WIDTH
30"	4'-0"
36"	5'-0"
48"	6'-0"
60"	7'-0"



SPECIFICATIONS

- CONCRETE:** CLASS I/II CONCRETE WITH DESIGN STRENGTH OF 4500 PSI AT 28 DAYS. UNIT IS MONOLITHIC CONSTRUCTION AT FLOOR AND FIRST STAGE OF WALL WITH SECTIONAL RISER TO REQUIRED DEPTH.
- REINFORCEMENT:** GRADE 60 REINFORCED WITH STEEL REBAR CONFORMING TO ASTM A615 ON REQUIRED CENTERS OR EQUAL.
- ACCESS:** MANHOLE FRAMES, COVERS OR GRATES ARE MANUFACTURED OF GREY CAST IRON CONFORMING TO ASTM A48-76 CLASS 30.
- STEEL COVER:** GALVANIZED STEEL SKID-RESISTANT SINGLE LEAF H-20 LOADED.

ENGINEERING DATA

INTERCEPTOR IS STRUCTURALLY AND HYDRAULICALLY ENGINEERED CONFORMING TO REGULATORY STANDARDS. NOMINAL TOTAL LIQUID CAPACITY AND OIL HOLDING CAPACITY AS INDICATED.

STORMWATER INTERCEPTORS ARE UTILIZED TO REDUCE NON-POINT SOURCE POLLUTION ASSOCIATED WITH OIL AND SEDIMENT. THE INTERCEPTOR IS DESIGNED TO ALLOW FOR THE DETAINMENT OF SETTLEABLE & FLOATABLE SOLIDS & LIQUIDS. THE INTERCEPTOR SHOULD BE INSPECTED ON A REGULAR BASIS TO DETERMINE PROPER OPERATION AND CLEANING.



KEYED NOTES	
MARK	QTY/DESCRIPTION
1	1 PRECAST CONCRETE BOTTOM SECTION
2	1 PRECAST CONCRETE TOP
3	1 PRECAST CONCRETE EXTENSION AS REQ'D
4	1 GALV STEEL ACCESS HATCHWAY
5	1 ALL JOINTS TO BE SEALED W/ PLASTIC FLEXIBLE GASKET
6	1 SLUDGE BAFFLE
7	1 COALESCING MEDIA PACK
8	1 MANHOLE PIPING
9	1 PRECAST CONCRETE CONTROL MANHOLE
10	1 CONTROL MANHOLE DEBRIS SCREEN
11	1 30" DIA CAST IRON RING & COVER H20 TRAFFIC DUTY NAMEPLATE INDICATING MFG: PARKUSA 888-611-PARK
12	1 WWW.PARKUSA.COM MODEL: STORMTROOPER SWST-10 DATE MANUFACTURED SERIAL # XXXXXX

MODEL NO.	TOTAL CAPACITY USGd	TREATMENT PERFORMANCE			
		FLOWRATE GPM	FLOWRATE CFS	SOLIDS FT³	OIL USGd
SWST-10	1,000	650	1.45	60	460
SWST-15	1,500	875	1.95	115	570
SWST-20	2,000	1,125	2.51	130	1,080
SWST-25	2,500	1,375	3.06	145	1,080
SWST-30	3,000	1,600	3.56	215	1,080
SWST-35	3,500	1,775	3.95	390	1,080
SWST-40	4,000	1,950	4.34	225	1,880
SWST-45	4,500	2,150	4.79	475	1,175
SWST-50	5,000	2,350	5.23	340	1,680
SWST-60	6,000	2,675	5.96	450	1,680
SWST-70	7,000	3,000	6.68	500	2,375
SWST-80	8,000	3,325	7.41	635	2,375
SWST-90	9,000	3,625	8.07	770	2,375
SWST-100	10,000	3,900	8.69	910	2,375
SWST-110	11,000	4,175	9.30	830	3,490
SWST-120	12,000	4,425	9.86	970	3,490
SWST-130	13,000	4,725	10.52	1,070	3,740
SWST-140	14,000	4,950	11.02	1,200	3,740
SWST-150	15,000	5,200	11.58	1,335	3,740

OTHER SIZES & CONFIGURATIONS ARE AVAILABLE



© ParkUSA. ALL RIGHTS RESERVED.



STORMWATER INTERCEPTOR
STORMTROOPER MODEL SWST - 10-150

PM	PC	DRN	ENG	DWG. NO.	REV.
DATE	2023			SWST-1	A

CREATED ON 2/13/2023 BY ... LAST MODIFIED ON 5/8/2023 1:30 PM BY howerton

PLOTTED ON 5/8/2023 1:32 PM BY howerton, Chris. Y: V:\parkinga\Website 2022 - 1 NEED TO QC STORMTROOPER\Worked on\SWST-1