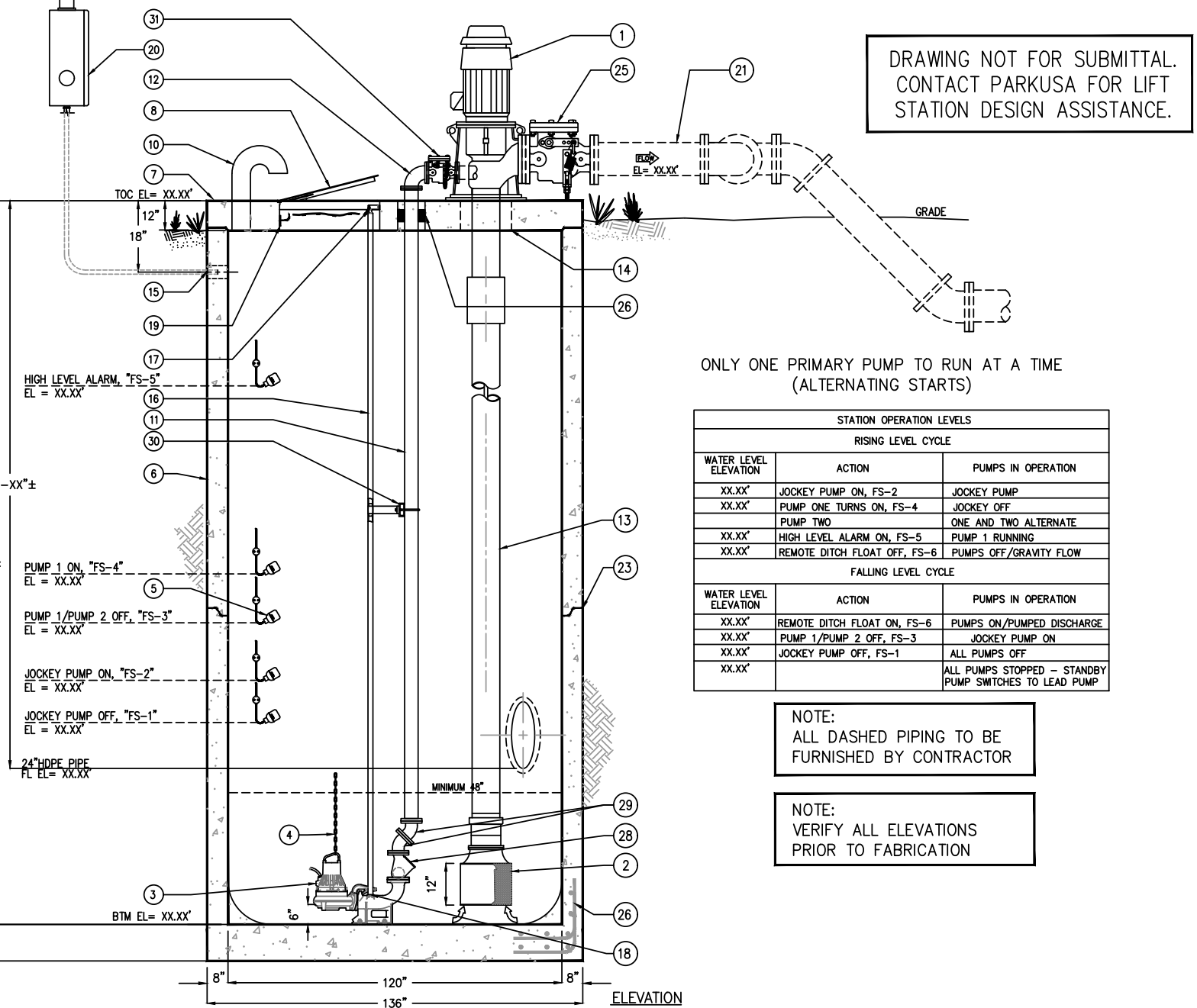
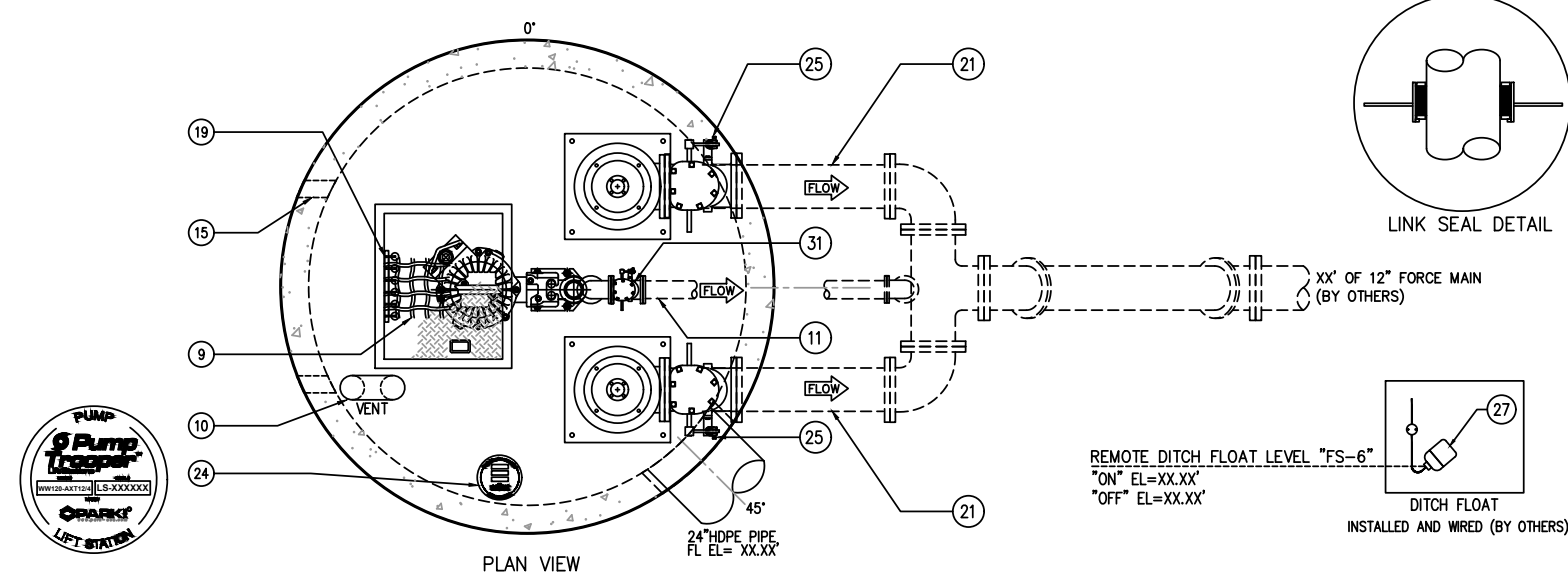


CREATED ON 10/19/2022 BY JENNING LAST MODIFIED ON 10/19/2022 10:40 AM BY JENNING



DRAWING NOT FOR SUBMITTAL.
CONTACT PARKUSA FOR LIFT
STATION DESIGN ASSISTANCE.

ONLY ONE PRIMARY PUMP TO RUN AT A TIME
(ALTERNATING STARTS)

| STATION OPERATION LEVELS | | |
|--------------------------|------------------------------|---|
| RISING LEVEL CYCLE | | |
| WATER LEVEL ELEVATION | ACTION | PUMPS IN OPERATION |
| XX.XX' | JOCKEY PUMP ON, FS-2 | JOCKEY PUMP |
| XX.XX' | PUMP ONE TURNS ON, FS-4 | JOCKEY OFF |
| XX.XX' | PUMP TWO | ONE AND TWO ALTERNATE |
| XX.XX' | HIGH LEVEL ALARM ON, FS-5 | PUMP 1 RUNNING |
| XX.XX' | REMOTE DITCH FLOAT OFF, FS-6 | PUMPS OFF/GRAVITY FLOW |
| FALLING LEVEL CYCLE | | |
| WATER LEVEL ELEVATION | ACTION | PUMPS IN OPERATION |
| XX.XX' | REMOTE DITCH FLOAT ON, FS-6 | PUMPS ON/PUMPED DISCHARGE |
| XX.XX' | PUMP 1/PUMP 2 OFF, FS-3 | JOCKEY PUMP ON |
| XX.XX' | JOCKEY PUMP OFF, FS-1 | ALL PUMPS OFF |
| XX.XX' | | ALL PUMPS STOPPED - STANDBY PUMP SWITCHES TO LEAD PUMP |

NOTE:
ALL DASHED PIPING TO BE
FURNISHED BY CONTRACTOR

NOTE:
VERIFY ALL ELEVATIONS
PRIOR TO FABRICATION

| KEYED NOTES | | |
|-------------|-----|---|
| MARK | QTY | DESCRIPTION |
| 1 | 2 | 12" AXIAL FLOW PUMP (TYP-2) |
| 2 | 2 | BELL SUCTION w/ ANTI-VORTEX SCREEN |
| 3 | 1 | 4" SUBMERSIBLE JOCKEY PUMP W/BASE ELBOWS |
| 4 | 1 | SS LIFTING CHAIN |
| 5 | 5 | TYPICAL FLOAT SWITCH |
| 6 | 1 | 120" DIA x XX'-XX" DEEP CONCRETE WET WELL |
| 7 | 1 | 12" THK FLAT CONCRETE TOP |
| 8 | 1 | 30"x36" SINGLE LEAF ALUMINUM HATCHWAY |
| 9 | 2 | SAFETY NET |
| 10 | 1 | 6" GALVANIZED VENT |
| 11 | 1 | 4" D.I. DISCHARGE PIPE |
| 12 | 1 | 4" FLxMJ 90° ELL |
| 13 | 2 | 12" PIPE COLUMN |
| 14 | 2 | 22" BLOCK-OUT FOR PUMPS |
| 15 | 2 | 3" ELECTRICAL COUPLING (TYP-2) |
| 16 | 2 | SS GUIDE RAIL |
| 17 | 1 | SS UPPER GUIDE BRACKET |
| 18 | 1 | LIFT-OUT ASSEMBLY |
| 19 | 2 | SS CABLE BRACKET |
| 20 | 1 | TRIPLEX CONTROL PANEL (REMOTE MTD) w/ GENERATOR RECEPTACLE |
| 21 | 2 | 12" DISCHARGE PIPE (BY OTHERS) |
| 22 | - | REBAR AS REQ'D |
| 23 | - | ALL JOINTS MADE WATER-TIGHT w/ PLASTIC FLEXIBLE GASKET (RAM-NEK) |
| 24 | 1 | NAMEPLATE INDICATING: MFG: PARKUSA 888-611-PARK WWW.PARKUSA.COM MODEL: WW120-T-12-2723-32-400-43 DATE MANUFACTURED |
| 25 | 2 | 12" DEZURIK L&W SWING CHECK |
| 26 | 1 | (7PCS) LS-410 LINK SEAL w/ GALV SLEEVE |
| 27 | 1 | REMOTE MOUNT DITCH FLOAT (MOUNTED & WIRED BY OTHERS) |
| 28 | 1 | 4" BALL CHECK VALVE |
| 29 | 2 | 4" FLxFL DI 45° ELL |
| 30 | 1 | INTERMEDIATE GLIDE BRACKET |
| 31 | 1 | 4" DEZURIK L&W SWING CHECK VALVE |

MODEL NUMBER: PARKUSA
888-611-PARK, WWW.PARKUSA.COM
WW120-T-12-2723-32-400-43

| | |
|--------------------------|-----------------------------|
| WET WELL SIZE (ID) | POWER CHARACTERISTICS |
| 48 - 48" DIA | 43 - 460V/3PH/60Hz |
| 60 - 60" DIA | 23 - 230V/3PH/60Hz |
| 72 - 72" DIA | 21 - 230V/1PH/60Hz |
| 84 - 84" DIA | |
| PUMP CONFIGURATION | PUMP MOTOR SIZE |
| S - SIMPLEX | 020 - 2.0 HP |
| D - DUPLEX | 030 - 3.0 HP |
| | 050 - 5.0 HP |
| | 075 - 7.5 HP |
| | 100 - 10.0 HP |
| | 400 - 40.0 HP |
| | ETC... |
| DISCHARGE SIZE | PUMP HEAD CAPACITY (TDH) |
| 8 - 8" | 8 - 8' TOTAL DYNAMIC HEAD |
| 12 - 12" | 20 - 20' TOTAL DYNAMIC HEAD |
| 24 - 24" | ETC... |
| 30 - 30" | |
| FLOW RATE CAPACITY (GPM) | |
| 765 - 765 GPM | |
| 2000 - 2000 GPM | |
| ETC... | |

Specifications

CONCRETE:
Class I/II concrete with design strength of 4500 PSI at 28 days. Unit is of monolithic construction at floor, first stage of wall and baffle with sectional riser to required depth.

REINFORCEMENT:
Grade 60 reinforced with steel rebar conforming to ASTM A615 on required centers or equal.

C.I. CASTINGS:
Manhole frames, covers or grates are manufactured of grey cast iron conforming to ASTM A48-76 Class 30. Manhole shall have 24 inch inside diameter and be traffic duty.

ALUMINUM HATCHWAY
1/4" Aluminum diamond plate cover, with 1/4" extruded aluminum frame. Hatch to be furnished with 316 Stainless Steel snap lock & brass hinges.

PUMPS:
Pumps shall be centrifugal solids handling type with submersible type motor. Pumps shall have a capacity as follows:

| PUMP No. | TYPE | GPM | TDH | RPM | HP | V | PH | Hz |
|----------|----------|------|-------|------|----|-----|----|----|
| 1 | AXIAL | 2723 | 32 | 1750 | 40 | 480 | 3 | 60 |
| 2 | AXIAL | 2723 | 32 | 1750 | 40 | 480 | 3 | 60 |
| 3 | NON-CLOG | 450 | 22.5' | 1750 | 5 | 480 | 3 | 60 |

CONTROLS:
Pump controls shall be mounted inside a UL Listed NEMA-4X enclosure and include circuit breakers, alarm circuit fuse, IEC rated motor starter, pump HOA, generator receptacle and alternator relay. Panel shall have a visual alarm beacon. Panel is designed for remote mounting.

Engineering Data
Field excavation and preparation shall be completed prior to delivery of assembly. Use dimensional data as shown. All pipe, valves and fittings of the assembly are approved by one of the following associations:



| REV | DATE | BY | DESCRIPTION |
|--|------|-----------|---------------|
| | | | |
| PROJECT: . | | | |
| CUSTOMER: . | | | |
| ENGINEER: . | | | |
| ORDER #: | | PROJ #: | |
| DATE: | | LOCATION: | |
| PARK USA A Northwest Pipe Company | | | |
| STORM SEWER LIFT STATION TRIPLEX AXIAL FLOW PUMP SYSTEM | | | |
| PM | PC | DRN | ENG |
| DWG. NO. | | | REV. |
| DATE 10/22 | | | WW120-AXT12/4 |
| | | | A |

PLOTTED ON 10/19/2022 2:34 PM BY JENNING, Jonathan. Y:\Parkdwa\LS - LIFT STATIONS\WEBSTER\2022\WW120-AXT12-4