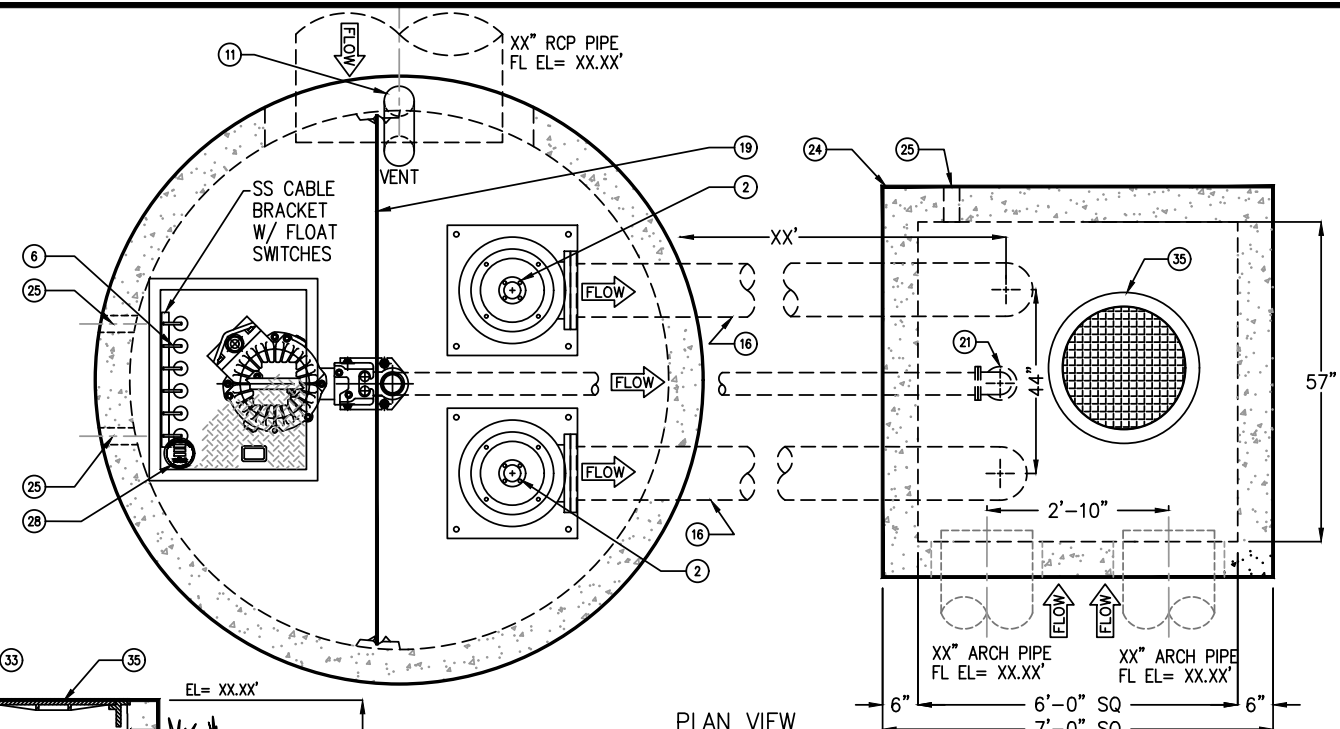
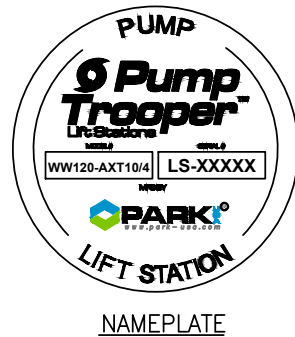
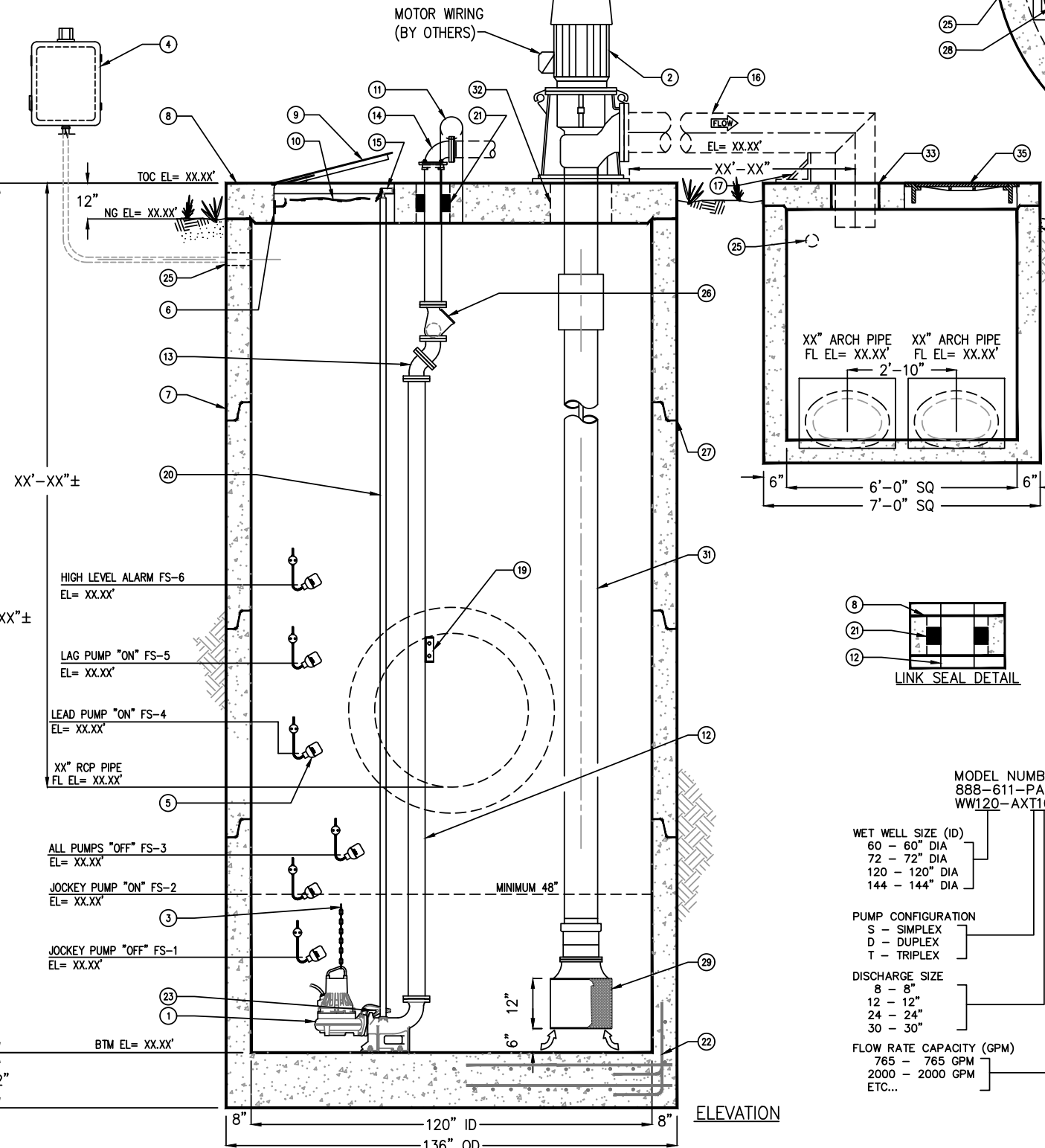


STATION OPERATION LEVELS		
RISING LEVEL CYCLE		
WATER LEVEL ELEVATION	ACTION	PUMPS IN OPERATION
XX.XX'	JOCKEY PUMP "ON", FS-2	JOCKEY PUMP "ON"
XX.XX'	LEAD PUMP "ON", FS-4	LEAD PUMP & JOCKEY PUMP "ON"
XX.XX'	LAG PUMP "ON", FS-5	LAG PUMP "ON"
XX.XX'	HIGH LEVEL ALARM "ON", FS-6	HIGH LEVEL ALARM SOUND
XX.XX'	DITCH FLOAT, FS-7	DITCH FLOAT "ON"
FALLING LEVEL CYCLE		
XX.XX'	DITCH FLOAT, FS-7	DITCH FLOAT "OFF"
XX.XX'	HIGH WAER LEVEL ALARM OFF, FS-6	HIGH LEVEL ALARM "OFF"
XX.XX'	ALL PUMP "OFF", FS-3	ALL PUMP "OFF" LAG PUMP SWITCHES TO LEAD PUMP
XX.XX'	JOCKEY PUMP "OFF", FS-1	NONE



KEYED NOTES		
MRK	QTY	DESCRIPTION
1	1	4" JOCKEY PUMP
2	2	10" AXIAL FLOW PUMPS
3	1	STAINLESS STEEL LIFTING CHAINS
4	1	TRIPLEX CONTROL PANEL W/ GENERATOR RECEPTACLE(REMOTE MOUNTED BY OTHERS)
5	5	FLOAT SWITCH
6	1	SS CABLE BRACKET
7	1	120" DIA x 19'-9" DEEP CONCRETE WET WELL
8	1	12" THK FLAT CONCRETE TOP
9	1	30"x36" SINGLE LEAF ALUMINUM HATCH w/ SS HINGES & SLAMLOCK
10	1	SAFETY NET
11	1	6" GALVANIZED VENT
12	2	4" DI DISCHARGE PIPE
13	2	4" DI 45' ELL W/ STAR GRIP
14	1	4" FLXJM 90° ELL
15	1	SS UPPER GUIDE BRACKETS
16	2	10" DISCHARGE PIPE (BY OTHERS)
17	2	GALV STEEL PIPE SUPPORTS (BY OTHERS)
18	1	NOT USED
19	1	SS PIPE SUPPORT
20	2	SS GUIDE RAILS
21	-	8" GALV SLEEVE FOR 7 PCS LS-410
22	-	REBAR AS REQ'D
23	1	LIFT-OUT ASSEMBLY
24	1	6'-0" SQ x 6'-0" x 3'-9" DEEP PRECAST CONCRETE JUNCTION BOX W/ 6" TOP
25	3	3" ELECTRICAL COUPLING
26	1	4" BALL CHECK VALVE
27	-	ALL JOINTS MADE WATER-TIGHT w/ PLASTIC FLEXIBLE GASKET (RAM-NEK)
28	1	NAMEPLATE INDICATING: MFG: PARKUSA 888-611-PARK WWW.PARKUSA.COM MODEL: WW120-AXT10/4-2688-18.1-20-43 DATE MANUFACTURED
29	2	BELL SUCTION w/ CLIP ON SCREEN
30	1	HIGH LEVEL DITCH FLOAT w/ STILLING WELL
31	2	10" DIA PIPE COLUMN
32	2	26" HOLE FOR PUMP SHAFT AND BASKET
33	2	14" GALV SLEEVE FOR 14 PCS LS-475
34	1	NOT USED
35	1	32" CAST IRON RING & COVER



DRAWING NOT FOR SUBMITTAL.
CONTACT PARKUSA FOR LIFT STATION DESIGN ASSISTANCE.

NOTE:
ALL DASHED PIPING TO BE FURNISHED BY CONTRACTOR

NOTE:
VERIFY ALL ELEVATIONS PRIOR TO FABRICATION

NOTE:
VERIFY ALL INLET/OUTLET ORIENTATIONS PRIOR TO FABRICATION

SPECIFICATION

CONCRETE:
CLASS I/II CONCRETE WITH DESIGN STRENGTH OF 4500 PSI AT 28 DAYS. UNIT IS OF MONOLITHIC CONSTRUCTION AT FLOOR, FIRST STAGE OF WALL AND BAFFLE WITH SECTIONAL RISER TO REQUIRED DEPTH.

REINFORCEMENT:
GRADE 60 REINFORCED WITH STEEL REBAR CONFORMING TO ASTM A615 ON REQUIRED CENTERS OR EQUAL.

ALUMINUM HATCH:
300 PSF RATED, 1/4" ALUMINUM SKID-RESISTANT FLOOR PLATE, STAINLESS STEEL TAMPERPROOF BOLTING, HINGES & SLAMLOCK. (H-20 RATING OPTIONAL)

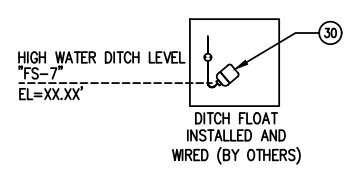
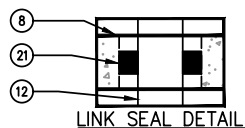
GALVANIZED STEEL HATCH:
GALVANIZED, BOLT DOWN HATCHWAY. DOOR LEAFS SHALL BE A 1/4" THICK STEEL DIAMOND PLATE REINFORCED WITH 2 1/2"x2 1/2"x1/2" ANGLE TO AN AASHTO H-20 WHEEL LOAD.

PUMPS:
PUMPS SHALL BE VERTICAL AXIAL TYPE WITH TOP MOUNT MOTOR. PUMPS SHALL HAVE A CAPACITY AS FOLLOWS:

PUMP No.	TYPE	GPM	TDH	RPM	HP	ELECTRICAL V	FH	Hz
P-1	AXIAL	2688	18.1	1200	20	460	3	60
P-2	AXIAL	2688	18.1	1200	20	460	3	60
P-3	NON-CLOG	450	27	1750	7.5	460	3	60

CONTROLS:
PUMP CONTROLS SHALL BE MOUNTED INSIDE A UL LISTED NEMA-4X ENCLOSURE AND INCLUDE CIRCUIT BREAKERS, ALARM CIRCUIT FUSE, IEC RATED MOTOR STARTER, PUMP HOA, AND ALTERNATOR RELAY. PANEL SHALL HAVE A VISUAL ALARM BEACON. PANEL IS DESIGNED FOR REMOTE MOUNTING.

ENGINEERING DATA
FIELD EXCAVATION AND PREPARATION SHALL BE COMPLETED PRIOR TO DELIVERY OF ASSEMBLY. USE DIMENSIONAL DATA AS SHOWN. ALL PIPE, VALVES AND FITTINGS OF THE ASSEMBLY ARE APPROVED BY ONE OF THE FOLLOWING ASSOCIATIONS:



MODEL NUMBER: PARKUSA
888-611-PARK, WWW.PARKUSA.COM
WW120-AXT10-2688-18.1-200-43

WET WELL SIZE (ID)
60 - 60" DIA
72 - 72" DIA
120 - 120" DIA
144 - 144" DIA

PUMP CONFIGURATION
S - SIMPLEX
D - DUPLEX
T - TRIPLEX

DISCHARGE SIZE
8 - 8"
12 - 12"
24 - 24"
30 - 30"

FLOW RATE CAPACITY (GPM)
765 - 765 GPM
2000 - 2000 GPM
ETC...

POWER CHARACTERISTICS
43 - 460V/3PH/60Hz
23 - 230V/3PH/60Hz
21 - 230V/1PH/60Hz

PUMP MOTOR SIZE
020 - 2.0 HP
030 - 3.0 HP
050 - 5.0 HP
075 - 7.5 HP
100 - 10.0 HP
400 - 40.0 HP
ETC...

PUMP HEAD CAPACITY (TDH)
8 - 8' TOTAL DYNAMIC HEAD
20 - 20' TOTAL DYNAMIC HEAD
ETC...

© ParkUSA. ALL RIGHTS RESERVED.

REV	DATE	BY	DESCRIPTION
A			

PROJECT: .
CUSTOMER: .
ENGINEER: .
ORDER #: . PROJ #: .
DATE: . LOCATION: .

STORM WATER LIFT STATION
TRIPLEX AXIAL FLOW PUMP SYSTEM

PM	PC	DRN	ENG	DWG. NO.	REV.
				WW120-AXT10/4	A

DATE 10/22

CREATED ON 10/25/2022 BY JENNINGS
LAST MODIFIED ON 10/25/2022 12:37 PM BY JENNINGS

PLOTTED ON 10/25/2022 2:37 PM BY Jennings, Jonathan. Y:\Parkdgs\LS - LIFT STATIONS\WEBSTIE\2022\WW120-AXT10-4 with DISCHARGE STATION