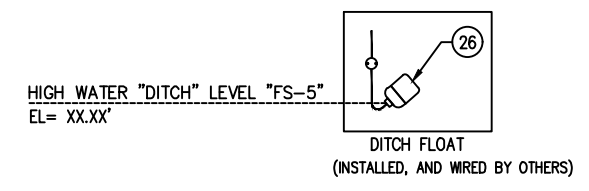
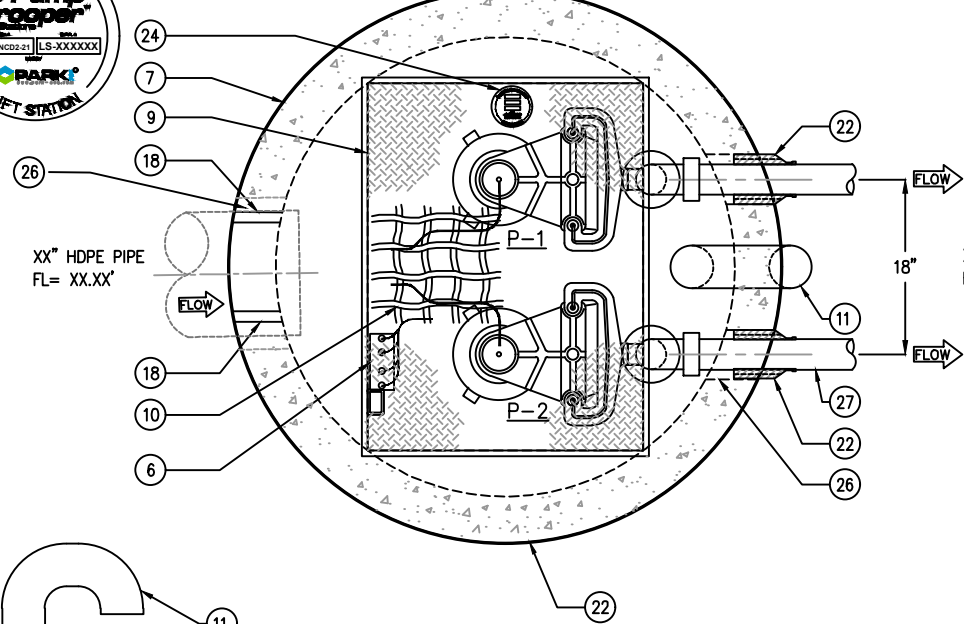
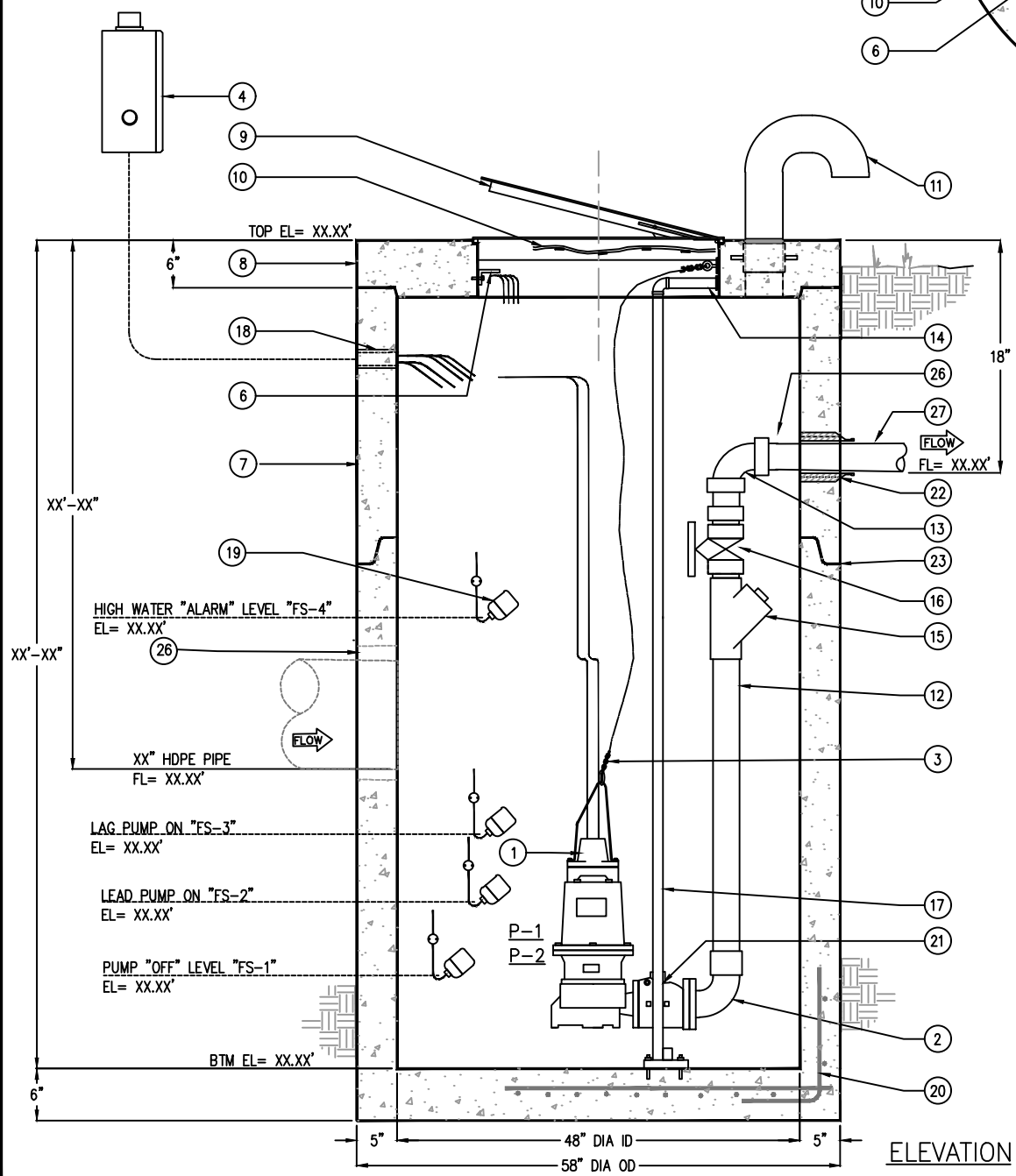


STATION OPERATION LEVELS		
RISING LEVEL CYCLE		
WATER LEVEL ELEVATION	ACTION	PUMPS IN OPERATION
XX.XX'	LEAD PUMP TURNS "ON", FS-2	LEAD PUMP "ON"
XX.XX'	LAG PUMP TURNS "ON", FS-3	LEAD & LAG PUMPS "ON"
XX.XX'	HIGH WATER "ALARM" LEVEL, FS-4	HIGH LEVEL ALARM "ON"
XX.XX'	DITCH HALF FULL FS-5	PUMPS "OFF"
FALLING LEVEL CYCLE		
XX.XX'	HIGH WATER ALARM, FS-4	HIGH LEVEL ALARM "OFF"
XX.XX'	DITCH WATER RECEDING FS-5	PUMPS "ON"
XX.XX'	PUMPS "OFF" LEVEL, FS-1	ALL PUMPS "OFF" LAG PUMP SWITCHES TO LEAD PUMP



DRAWING NOT FOR SUBMITTAL.  
CONTACT PARKUSA FOR LIFT  
STATION DESIGN ASSISTANCE.

KEYED NOTES		
MARK	QTY	DESCRIPTION
1	2	2" SUBMERSIBLE PUMP
2	2	2" BASE ELBOW
3	2	STAINLESS STEEL CHAINS
4	1	DUPLEX 4X FRP CONTROL PANEL W/ GEN RECEPTACLE (MOUNTED BY CONTRACTOR)
5	1	NOT USED
6	1	SS CABLE BRACKET
7	1	48" DIA x XX'-XX" DEEP CONCRETE WET WELL
8	1	6" THK FLAT CONCRETE TOP
9	1	30"x36" SINGLE LEAF ALUMINUM HATCHWAY
10	1	SAFETY NET
11	1	4" GALVANIZED VENT
12	2	2" SCH 80 PVC DISCHARGE PIPE
13	2	2" SCH 80 PVC 90° ELL
14	2	SS UPPER GUIDE BRACKETS
15	2	2" PVC BALL CHECK VALVE
16	2	2" PVC BALL VALVE w/ UNIONS
17	4	SS GUIDE RAILS
18	2	3" ELECTRICAL COUPLING
19	4	FLOAT SWITCH
20	-	REBAR AS REQ'D
21	2	LIFT-OUT ASSEMBLY
22	2	RESILIENT RUBBER BOOT
23	-	ALL JOINTS MADE WATER-TIGHT w/ PLASTIC FLEXIBLE GASKET (RAM-NEK)
24	1	NAMEPLATE INDICATING: MFG: PARKUSA 888-611-PARK WWW.PARKUSA.COM MODEL: WW48-NCD2-106-16-075-21 DATE MANUFACTURED
25	1	REMOTE MOUNT DITCH FLOAT (MOUNTED & WIRED BY OTHERS)
26	2	NON SHRINK GROUT (BY OTHERS)
27	2	2" SCH 80 PVC DISCHARGE PIPE



- NOTE:  
ALL DASHED PIPING TO BE FURNISHED BY CONTRACTOR
- NOTE:  
VERIFY ALL ELEVATIONS PRIOR TO FABRICATION
- NOTE:  
VERIFY ALL INLET/OUTLET ORIENTATIONS PRIOR TO FABRICATION

**Specifications**

**CONCRETE:**  
CLASS II/II CONCRETE WITH DESIGN STRENGTH OF 4500 PSI AT 28 DAYS. UNIT IS OF MONOLITHIC CONSTRUCTION AT FLOOR, FIRST STAGE OF WALL AND Baffle WITH SECTIONAL RISER TO REQUIRED DEPTH.

**REINFORCEMENT:**  
GRADE 60 REINFORCED WITH STEEL REBAR CONFORMING TO ASTM A615 ON REQUIRED CENTERS OR EQUAL.

**ALUMINUM HATCH:**  
300 PSF RATED, 1/4" ALUMINUM SKID-RESISTANT FLOOR PLATE, STAINLESS STEEL TAMPERPROOF BOLTING & HINGES & SLAMLOCK. (H-20 RATING OPTIONAL)

**PUMPS:**  
PUMPS SHALL BE CENTRIFUGAL TYPE WITH INTEGRAL NON-CLOG UNIT AND SUBMERSIBLE TYPE MOTOR. PUMPS SHALL HAVE A CAPACITY AS FOLLOWS:

PUMP No.	TYPE	ELECTRICAL						
		GPM	TDH	RPM	HP	V	PH	Hz
P-1	NON CLOG	106	16'	1750	.75	240	1	60
P-2	NON CLOG	106	16'	1750	.75	240	1	60

**CONTROLS:**  
PUMP CONTROLS SHALL BE MOUNTED INSIDE A UL LISTED NEMA-4X ENCLOSURE AND INCLUDE CIRCUIT BREAKERS, ALARM CIRCUIT FUSE, IEC RATED MOTOR STARTER, PUMP HOA, AND ALTERNATOR AND RELAY. PANEL SHALL HAVE A VISUAL ALARM BEACON. PANEL IS DESIGNED FOR REMOTE MOUNTING

**Engineering Data**

FIELD EXCAVATION AND PREPARATION SHALL BE COMPLETED PRIOR TO DELIVERY OF ASSEMBLY. USE DIMENSIONAL DATA AS SHOWN. ALL PIPE, VALVES AND FITTINGS OF THE ASSEMBLY ARE APPROVED BY ONE OF THE FOLLOWING ASSOCIATIONS:



MODEL NUMBER: ParkUSA 888-611-PARK, www.PARKUSA.com  
WW48-NCD2-106-16-075-21

WET WELL SIZE (ID)	POWER CHARACTERISTICS
48 - 48" DIA	43 - 460V/3PH/60Hz
60 - 60" DIA	23 - 230V/3PH/60Hz
72 - 72" DIA	21 - 230V/1PH/60Hz
96 - 96" DIA	03 - 208V/3PH/60Hz
	01 - 208V/1PH/60Hz
PUMP CONFIGURATION	NON-CLOG PUMP SIZE
S - SIMPLEX	01 - 1.0 HP
D - DUPLEX	20 - 2.0 HP
	30 - 3.0 HP
PUMP DISCHARGE SIZE	50 - 5.0 HP
3 - 3"	75 - 7.5 HP
4 - 4"	
6 - 6"	PUMP HEAD CAPACITY (TDH)
8 - 8"	10 - 10' TDH
FLOW RATE CAPACITY (GPM)	20 - 20' TDH
100 - 100GPM	ETC...
200 200 GPM	
ETC...	

© ParkUSA. ALL RIGHTS RESERVED.

A	.	.	.
REV	DATE	BY	DESCRIPTION
PROJECT: .			
CUSTOMER: .			
ENGINEER: .			
ORDER #:	.		PROJ #:
DATE:	.		LOCATION:
<b>PARK USA</b> A Northwest Pipe Company			
STORM SEWER LIFT STATION SUBMERSIBLE NON-CLOG PUMP STATION			
PM	PC	DRN	ENG
DATE	10/22		DWG. NO.
			WW48-NCD2-21.
			REV. A

CREATED ON 4/19/2024 BY . . . . .  
LAST MODIFIED ON 4/19/2024 3:49 PM BY kw

PLOTTED ON 4/19/2024 3:49 PM BY Vu, Kate, G: Users\vu\Desktop\Files replacement website\WW48-NCD2-21